



[Go to Product page](#)

Datasheet for ABIN5533174

## anti-Dopamine d2 Receptor antibody (C-Term)

### 3 Images

#### Overview

Quantity:	400 µL
Target:	Dopamine d2 Receptor (DRD2)
Binding Specificity:	AA 307-336, C-Term
Reactivity:	Human, Mouse
Host:	Rabbit
Clonality:	Polyclonal
Conjugate:	This Dopamine d2 Receptor antibody is un-conjugated
Application:	Western Blotting (WB)

#### Product Details

Immunogen:	This DRD2 antibody is generated from rabbits immunized with a KLH conjugated synthetic peptide between 307-336 amino acids from the C-terminal region of human DRD2.
Isotype:	Ig Fraction
Purification:	This antibody is purified through a protein A column, followed by peptide affinity purification.

#### Target Details

Target:	Dopamine d2 Receptor (DRD2)
Alternative Name:	DRD2 ( <a href="#">DRD2 Products</a> )
Background:	This gene encodes the D2 subtype of the dopamine receptor. This G-protein coupled receptor inhibits adenylyl cyclase activity. A missense mutation in this gene causes myoclonus dystonia, other mutations have been associated with schizophrenia. Alternative splicing of this gene

## Target Details

---

results in two transcript variants encoding different isoforms. A third variant has been described, but it has not been determined whether this form is normal or due to aberrant splicing.

Molecular Weight: 51 kDa

Gene ID: 1813

UniProt: [P14416](#)

Pathways: [Positive Regulation of Peptide Hormone Secretion](#), [Negative Regulation of Hormone Secretion](#), [cAMP Metabolic Process](#), [Inositol Metabolic Process](#), [Regulation of G-Protein Coupled Receptor Protein Signaling](#), [Feeding Behaviour](#), [Negative Regulation of Transporter Activity](#), [Regulation of long-term Neuronal Synaptic Plasticity](#)

## Application Details

---

Application Notes: For WB starting dilution is: 1:2000

Restrictions: For Research Use only

## Handling

---

Format: Liquid

Concentration: 0.4 mg/mL

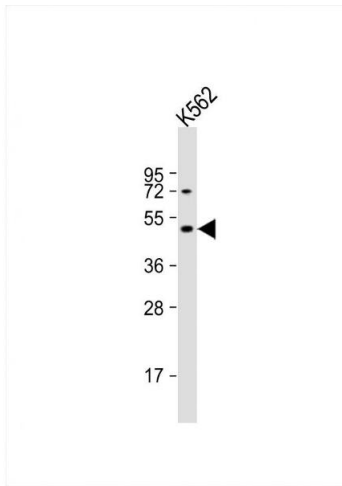
Buffer: Supplied in PBS with 0.09 % (W/V) sodium azide.

Preservative: Sodium azide

Precaution of Use: This product contains Sodium azide: a POISONOUS AND HAZARDOUS SUBSTANCE which should be handled by trained staff only.

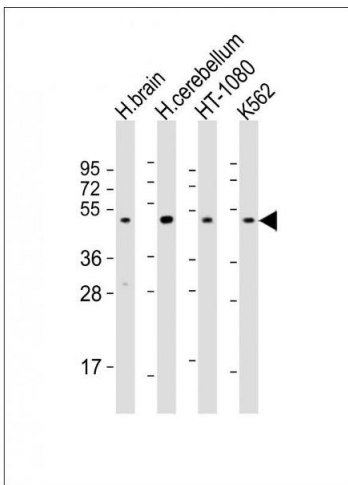
Storage: 4 °C,-20 °C

Storage Comment: Store at 4°C for three months and -20°C, stable for up to one year. As with all antibodies care should be taken to avoid repeated freeze thaw cycles. Antibodies should not be exposed to prolonged high temperatures.



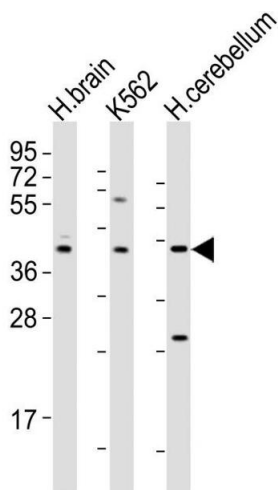
### Western Blotting

**Image 1.** Western Blot at 1:2000 dilution + K562 whole cell lysate Lysates/proteins at 20 ug per lane.



### Western Blotting

**Image 2.** Western Blot at 1:2000 dilution Lane 1: human brain lysate Lane 2: human cerebellum lysate Lane 3: HT-1080 whole cell lysate Lane 4: K562 whole cell lysate Lysates/proteins at 20 ug per lane.



### Western Blotting

**Image 3.** Western Blot at 1:2000 dilution Lane 1: human brain lysates Lane 2: K562 whole cell lysates Lane 3: human cerebellum lysates Lysates/proteins at 20 ug per lane.