

Datasheet for ABIN5533177  
**anti-Doublecortin antibody (AA 79-106)**

## 3 Images

[Go to Product page](#)

## Overview

Quantity:	400 µL
Target:	Doublecortin (DCX)
Binding Specificity:	AA 79-106
Reactivity:	Human, Mouse
Host:	Rabbit
Clonality:	Polyclonal
Conjugate:	This Doublecortin antibody is un-conjugated
Application:	Western Blotting (WB), Immunohistochemistry (Paraffin-embedded Sections) (IHC (p)), Flow Cytometry (FACS)

## Product Details

Immunogen:	This DCXR antibody is generated from rabbits immunized with a KLH conjugated synthetic peptide between 79-106 amino acids from the Central region of human DCXR.
Isotype:	Ig Fraction
Purification:	This antibody is prepared by Saturated Ammonium Sulfate (SAS) precipitation followed by dialysis

## Target Details

Target:	Doublecortin (DCX)
Alternative Name:	DCX ( <a href="#">DCX Products</a> )
Background:	DCXR is an enzyme that has both diacetyl reductase and L-xylulose reductase activities.

## Target Details

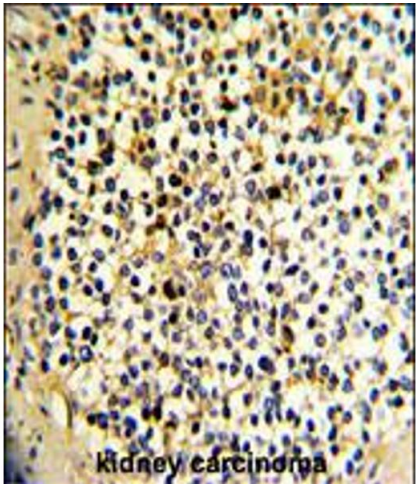
Molecular Weight:	26 kDa
Gene ID:	51181
UniProt:	<a href="#">Q7Z4W1</a>

## Application Details

Application Notes:	For WB starting dilution is: 1:1000
	For IHC-P starting dilution is: 1:50~100
	For FACS starting dilution is: 1:10~50
Restrictions:	For Research Use only

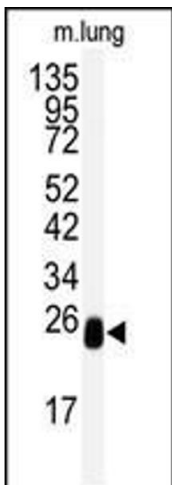
## Handling

Format:	Liquid
Concentration:	2 mg/mL
Buffer:	Supplied in PBS with 0.09 % (W/V) sodium azide.
Preservative:	Sodium azide
Precaution of Use:	This product contains Sodium azide: a POISONOUS AND HAZARDOUS SUBSTANCE which should be handled by trained staff only.
Storage:	4 °C, -20 °C
Storage Comment:	Store at 4°C for three months and -20°C, stable for up to one year. As with all antibodies care should be taken to avoid repeated freeze thaw cycles. Antibodies should not be exposed to prolonged high temperatures.



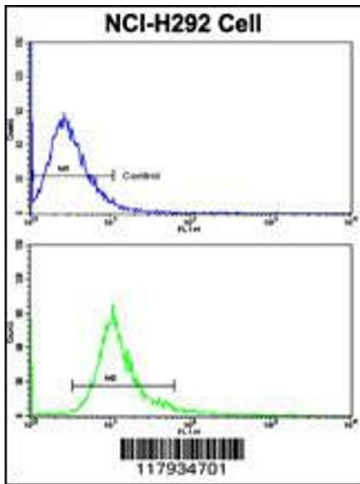
### Immunohistochemistry

**Image 1.** Formalin-fixed and paraffin-embedded human kidney carcinoma with DCXR Antibody , which was peroxidase-conjugated to the secondary antibody, followed by DAB staining.



### Western Blotting

**Image 2.** Western blot analysis of anti-DCXR Antibody in mouse lung tissue lysates (35ug/lane)



### Flow Cytometry

**Image 3.** Flow cytometric analysis of NCI-H292 cells using DCXR Antibody (bottom histogram) compared to a negative control cell (top histogram). FITC-conjugated goat-anti-rabbit secondary antibodies were used for the analysis.