

Datasheet for ABIN5533179

anti-ZMPSTE24 antibody (AA 400-430)**3** Images[Go to Product page](#)

Overview

Quantity:	400 µL
Target:	ZMPSTE24 (Zmpste24)
Binding Specificity:	AA 400-430
Reactivity:	Human, Mouse
Host:	Rabbit
Clonality:	Polyclonal
Conjugate:	This ZMPSTE24 antibody is un-conjugated
Application:	Western Blotting (WB), Immunohistochemistry (Paraffin-embedded Sections) (IHC (p))

Product Details

Immunogen:	This ZMPSTE24 antibody is generated from rabbits immunized with a KLH conjugated synthetic peptide between 400-430 amino acids from the Central region of human ZMPSTE24.
Isotype:	Ig Fraction
Purification:	This antibody is prepared by Saturated Ammonium Sulfate (SAS) precipitation followed by dialysis

Target Details

Target:	ZMPSTE24 (Zmpste24)
Alternative Name:	ZMPSTE24 (Zmpste24 Products)
Background:	ZMPSTE24 is a zinc metalloprotease similar to yeast Ste24p. It is an integral membrane protein belonging to peptidase family M48 and is found in the endoplasmic reticulum and possibly in

Target Details

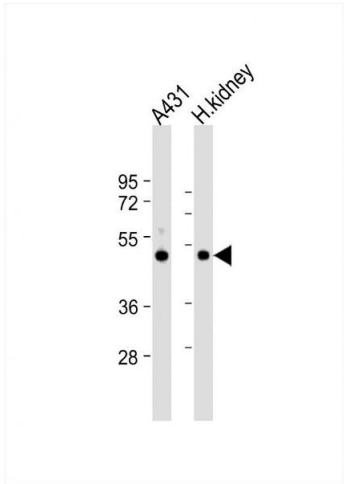
	the Golgi compartment. It is thought to be involved in the proteolytic processing of farnesylated proteins.
Molecular Weight:	55 kDa
Gene ID:	10269
UniProt:	075844

Application Details

Application Notes:	For WB starting dilution is: 1:1000 For IHC-P starting dilution is: 1:50~100
Restrictions:	For Research Use only

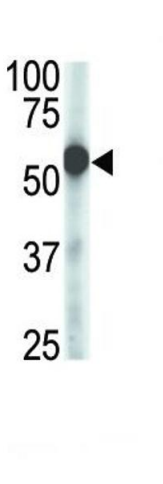
Handling

Format:	Liquid
Concentration:	2 mg/mL
Buffer:	Supplied in PBS with 0.09 % (W/V) sodium azide.
Preservative:	Sodium azide
Precaution of Use:	This product contains Sodium azide: a POISONOUS AND HAZARDOUS SUBSTANCE which should be handled by trained staff only.
Storage:	4 °C,-20 °C
Storage Comment:	Store at 4°C for three months and -20°C, stable for up to one year. As with all antibodies care should be taken to avoid repeated freeze thaw cycles. Antibodies should not be exposed to prolonged high temperatures.



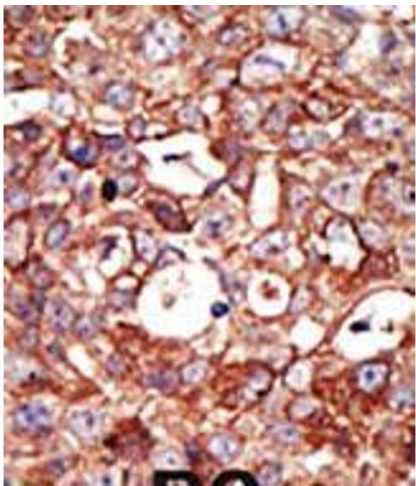
Western Blotting

Image 1. Western Blot at 1:1000 dilution Lane 1: A431 whole cell lysate Lane 2: human kidney lysate Lysates/proteins at 20 ug per lane.



Western Blotting

Image 2. Antibody is used in Western blot to detect ZMPSTE24 in mouse cerebellum tissue lysate.



Immunohistochemistry

Image 3. Formalin-fixed and paraffin-embedded human cancer tissue reacted with the primary antibody, which was peroxidase-conjugated to the secondary antibody, followed by DAB staining. BC = breast carcinoma; HC = hepatocarcinoma.