



[Go to Product page](#)

Datasheet for ABIN5533196
anti-IL23 antibody (C-Term)

1 Image

Overview

Quantity:	400 µL
Target:	IL23
Binding Specificity:	AA 428-457, C-Term
Reactivity:	Human
Host:	Rabbit
Clonality:	Polyclonal
Conjugate:	This IL23 antibody is un-conjugated
Application:	Western Blotting (WB)

Product Details

Immunogen:	This IL23R antibody is generated from rabbits immunized with a KLH conjugated synthetic peptide between 428-457 amino acids from the C-terminal region of human IL23R.
Isotype:	Ig Fraction
Purification:	This antibody is purified through a protein A column, followed by peptide affinity purification.

Target Details

Target:	IL23
Alternative Name:	IL23 (IL23 Products)
Background:	The protein encoded by this gene is a subunit of the receptor for IL23A/IL23. This protein pairs with the receptor molecule IL12RB1/IL12Rbeta1, and both are required for IL23A signaling. This protein associates constitutively with Janus kinase 2 (JAK2), and also binds to transcription

Target Details

activator STAT3 in a ligand-dependent manner.

Molecular Weight: 72 kDa

Gene ID: 149233

UniProt: [Q5VWK5](#)

Application Details

Application Notes: For WB starting dilution is: 1:1000

Restrictions: For Research Use only

Handling

Format: Liquid

Concentration: 0.5 mg/mL

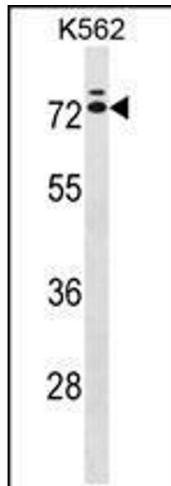
Buffer: Supplied in PBS with 0.09 % (W/V) sodium azide.

Preservative: Sodium azide

Precaution of Use: This product contains Sodium azide: a POISONOUS AND HAZARDOUS SUBSTANCE which should be handled by trained staff only.

Storage: 4 °C,-20 °C

Storage Comment: Store at 4°C for three months and -20°C, stable for up to one year. As with all antibodies care should be taken to avoid repeated freeze thaw cycles. Antibodies should not be exposed to prolonged high temperatures.



Western Blotting

Image 1. Western blot analysis in K562 cell line lysates (35ug/lane).