

Datasheet for ABIN5533199
anti-GTF2B antibody (N-Term)[Go to Product page](#)

2 Images

Overview

Quantity:	400 µL
Target:	GTF2B
Binding Specificity:	AA 42-71, N-Term
Reactivity:	Human, Mouse
Host:	Rabbit
Clonality:	Polyclonal
Conjugate:	This GTF2B antibody is un-conjugated
Application:	Western Blotting (WB)

Product Details

Immunogen:	This GTF2B antibody is generated from rabbits immunized with a KLH conjugated synthetic peptide between 42-71 amino acids from the N-terminal region of human GTF2B.
Isotype:	Ig Fraction
Purification:	This antibody is purified through a protein A column, followed by peptide affinity purification.

Target Details

Target:	GTF2B
Alternative Name:	GTF2B (GTF2B Products)
Background:	This gene encodes the general transcription factor IIB, one of the ubiquitous factors required for transcription initiation by RNA polymerase II. The protein localizes to the nucleus where it forms a complex (the DAB complex) with transcription factors IID and IIA. Transcription factor

Target Details

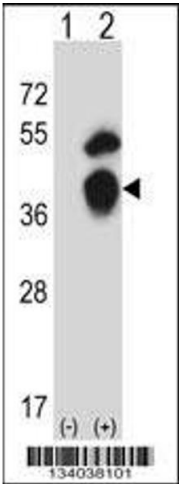
	IIB serves as a bridge between IID, the factor which initially recognizes the promoter sequence, and RNA polymerase II.
Molecular Weight:	35 kDa
Gene ID:	2959
UniProt:	Q00403

Application Details

Application Notes:	For WB starting dilution is: 1:1000
Restrictions:	For Research Use only

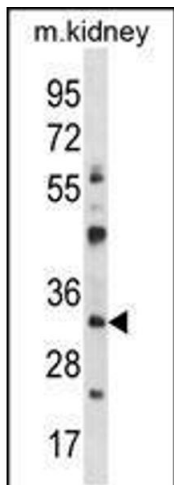
Handling

Format:	Liquid
Concentration:	0.5 mg/mL
Buffer:	Supplied in PBS with 0.09 % (W/V) sodium azide.
Preservative:	Sodium azide
Precaution of Use:	This product contains Sodium azide: a POISONOUS AND HAZARDOUS SUBSTANCE which should be handled by trained staff only.
Storage:	4 °C,-20 °C
Storage Comment:	Store at 4°C for three months and -20°C, stable for up to one year. As with all antibodies care should be taken to avoid repeated freeze thaw cycles. Antibodies should not be exposed to prolonged high temperatures.



Western Blotting

Image 1. Western blot analysis of GTF2B using rabbit polyclonal GTF2B Antibody using 293 cell lysates (2 ug/lane) either nontransfected (Lane 1) or transiently transfected (Lane 2) with the GTF2B gene.



Western Blotting

Image 2. Western blot analysis in mouse kidney tissue lysates (35ug/lane).