

Datasheet for ABIN5533203  
**anti-NUP88 antibody (C-Term)**



[Go to Product page](#)

1 Image

## Overview

Quantity:	400 µL
Target:	NUP88
Binding Specificity:	AA 701-730, C-Term
Reactivity:	Human
Host:	Rabbit
Clonality:	Polyclonal
Conjugate:	This NUP88 antibody is un-conjugated
Application:	Western Blotting (WB)

## Product Details

Immunogen:	This NUP88 antibody is generated from rabbits immunized with a KLH conjugated synthetic peptide between 701-730 amino acids from the C-terminal region of human NUP88.
Isotype:	Ig Fraction
Purification:	This antibody is purified through a protein A column, followed by peptide affinity purification.

## Target Details

Target:	NUP88
Alternative Name:	NUP88 ( <a href="#">NUP88 Products</a> )
Background:	The nuclear pore complex is a massive structure that extends across the nuclear envelope, forming a gateway that regulates the flow of macromolecules between the nucleus and the cytoplasm. Nucleoporins, a family of 50 to 100 proteins, are the main components of the

## Target Details

---

nuclear pore complex in eukaryotic cells. The protein encoded by this gene belongs to the nucleoporin family and is associated with the oncogenic nucleoporin CAN/Nup214 in a dynamic subcomplex. This protein is also overexpressed in a large number of malignant neoplasms and precancerous dysplasias.

---

Molecular Weight: 84 kDa

---

Gene ID: 4927

---

UniProt: [Q99567](#)

---

Pathways: [SARS-CoV-2 Protein Interactome](#)

## Application Details

---

---

Application Notes: For WB starting dilution is: 1:1000

---

Restrictions: For Research Use only

## Handling

---

---

Format: Liquid

---

Concentration: 0.5 mg/mL

---

Buffer: Supplied in PBS with 0.09 % (W/V) sodium azide.

---

Preservative: Sodium azide

---

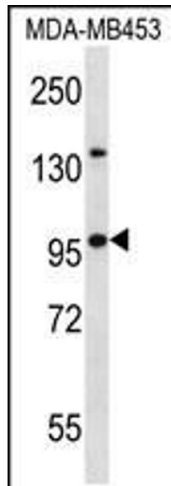
Precaution of Use: This product contains Sodium azide: a POISONOUS AND HAZARDOUS SUBSTANCE which should be handled by trained staff only.

---

Storage: 4 °C,-20 °C

---

Storage Comment: Store at 4°C for three months and -20°C, stable for up to one year. As with all antibodies care should be taken to avoid repeated freeze thaw cycles. Antibodies should not be exposed to prolonged high temperatures.



### Western Blotting

**Image 1.** Western blot analysis in MDA-MB453 cell line lysates (35ug/lane).