

Datasheet for ABIN5533208  
**anti-GPC2 antibody (N-Term)**[Go to Product page](#)

## 2 Images

## Overview

Quantity:	400 µL
Target:	GPC2
Binding Specificity:	AA 137-165, N-Term
Reactivity:	Human, Mouse
Host:	Rabbit
Clonality:	Polyclonal
Conjugate:	This GPC2 antibody is un-conjugated
Application:	Western Blotting (WB)

## Product Details

Immunogen:	This GPC2 antibody is generated from rabbits immunized with a KLH conjugated synthetic peptide between 137-165 amino acids from the N-terminal region of human GPC2.
Isotype:	Ig Fraction
Purification:	This antibody is purified through a protein A column, followed by peptide affinity purification.

## Target Details

Target:	GPC2
Alternative Name:	GPC2 ( <a href="#">GPC2 Products</a> )
Background:	Cell surface proteoglycan that bears heparan sulfate. It may fulfill a function related to the motile behaviors of developing neurons (By similarity).

## Target Details

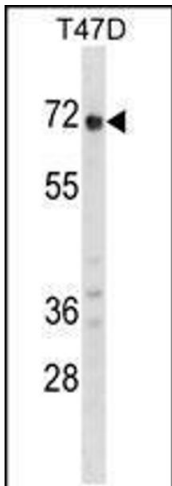
Molecular Weight:	63 kDa
Gene ID:	221914
UniProt:	<a href="#">Q8N158</a>
Pathways:	<a href="#">Glycosaminoglycan Metabolic Process</a>

## Application Details

Application Notes:	For WB starting dilution is: 1:1000
Restrictions:	For Research Use only

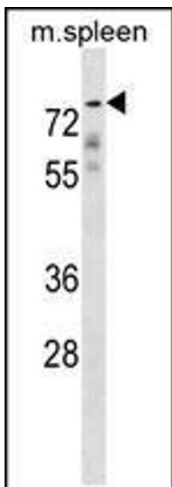
## Handling

Format:	Liquid
Concentration:	0.26 mg/mL
Buffer:	Supplied in PBS with 0.09 % (W/V) sodium azide.
Preservative:	Sodium azide
Precaution of Use:	This product contains Sodium azide: a POISONOUS AND HAZARDOUS SUBSTANCE which should be handled by trained staff only.
Storage:	4 °C,-20 °C
Storage Comment:	Store at 4°C for three months and -20°C, stable for up to one year. As with all antibodies care should be taken to avoid repeated freeze thaw cycles. Antibodies should not be exposed to prolonged high temperatures.



Western Blotting

**Image 1.** Western blot analysis in T47D cell line lysates (35ug/lane).



Western Blotting

**Image 2.** Western blot analysis in mouse spleen tissue lysates (35ug/lane).