

Datasheet for ABIN5533275  
**anti-MYH7 antibody (N-Term)**

## 2 Images

[Go to Product page](#)

## Overview

Quantity:	400 µL
Target:	MYH7
Binding Specificity:	AA 185-211, N-Term
Reactivity:	Human, Mouse
Host:	Rabbit
Clonality:	Polyclonal
Conjugate:	This MYH7 antibody is un-conjugated
Application:	Western Blotting (WB)

## Product Details

Immunogen:	This MYH7 antibody is generated from rabbits immunized with a KLH conjugated synthetic peptide between 185-211 amino acids from the N-terminal region of human MYH7.
Isotype:	Ig Fraction
Purification:	This antibody is purified through a protein A column, followed by peptide affinity purification.

## Target Details

Target:	MYH7
Alternative Name:	MYH7 ( <a href="#">MYH7 Products</a> )
Background:	Muscle myosin is a hexameric protein containing 2 heavy chain subunits, 2 alkali light chain subunits, and 2 regulatory light chain subunits. This gene encodes the beta (or slow) heavy chain subunit of cardiac myosin. It is expressed predominantly in normal human ventricle. It is

## Target Details

also expressed in skeletal muscle tissues rich in slow-twitch type I muscle fibers. Changes in the relative abundance of this protein and the alpha (or fast) heavy subunit of cardiac myosin correlate with the contractile velocity of cardiac muscle. Its expression is also altered during thyroid hormone depletion and hemodynamic overloading. Mutations in this gene are associated with familial hypertrophic cardiomyopathy, myosin storage myopathy, dilated cardiomyopathy, and Laing early-onset distal myopathy.

Molecular Weight:	223 kDa
-------------------	---------

Gene ID:	4625
----------	------

UniProt:	<a href="#">P12883</a>
----------	------------------------

## Application Details

Application Notes:	For WB starting dilution is: 1:1000
--------------------	-------------------------------------

Restrictions:	For Research Use only
---------------	-----------------------

## Handling

Format:	Liquid
---------	--------

Concentration:	0.5 mg/mL
----------------	-----------

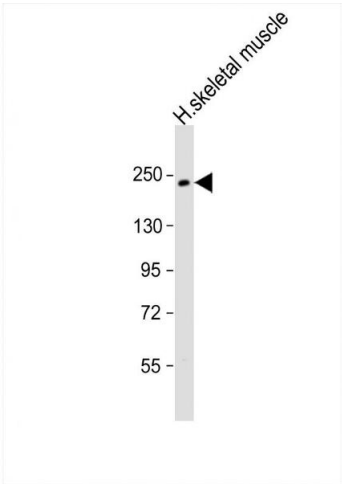
Buffer:	Supplied in PBS with 0.09 % (W/V) sodium azide.
---------	---

Preservative:	Sodium azide
---------------	--------------

Precaution of Use:	This product contains Sodium azide: a POISONOUS AND HAZARDOUS SUBSTANCE which should be handled by trained staff only.
--------------------	--

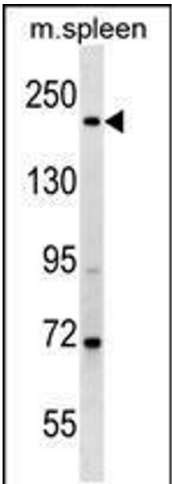
Storage:	4 °C, -20 °C
----------	--------------

Storage Comment:	Store at 4°C for three months and -20°C, stable for up to one year. As with all antibodies care should be taken to avoid repeated freeze thaw cycles. Antibodies should not be exposed to prolonged high temperatures.
------------------	--



Western Blotting

**Image 1.** Western Blot at 1:1000 dilution + human skeletal muscle lysate Lysates/proteins at 20 ug per lane.



Western Blotting

**Image 2.** Western blot analysis in mouse spleen tissue lysates (35ug/lane).