

Datasheet for ABIN5533293

anti-Phospholipase C delta 3 antibody (N-Term)[Go to Product page](#)**1** Image

Overview

Quantity:	400 µL
Target:	Phospholipase C delta 3 (PLCd3)
Binding Specificity:	AA 60-89, N-Term
Reactivity:	Mouse
Host:	Rabbit
Clonality:	Polyclonal
Conjugate:	This Phospholipase C delta 3 antibody is un-conjugated
Application:	Western Blotting (WB)

Product Details

Immunogen:	This PLCD3 antibody is generated from rabbits immunized with a KLH conjugated synthetic peptide between 60-89 amino acids from the N-terminal region of human PLCD3.
Isotype:	Ig Fraction
Purification:	This antibody is purified through a protein A column, followed by peptide affinity purification.

Target Details

Target:	Phospholipase C delta 3 (PLCd3)
Alternative Name:	PLCD3 (PLCd3 Products)
Background:	This gene encodes a member of the phospholipase C family, which catalyze the hydrolysis of phosphatidylinositol 4,5-bisphosphate to generate the second messengers diacylglycerol and inositol 1,4,5-trisphosphate (IP3). Diacylglycerol and IP3 mediate a variety of cellular responses

Target Details

to extracellular stimuli by inducing protein kinase C and increasing cytosolic Ca(2+) concentrations. This enzyme localizes to the plasma membrane and requires calcium for activation. Its activity is inhibited by spermine, sphingosine, and several phospholipids. [provided by RefSeq].

Molecular Weight: 89 kDa

Gene ID: 113026

UniProt: [Q8N3E9](#)

Pathways: [WNT Signaling](#)

Application Details

Application Notes: For WB starting dilution is: 1:1000

Restrictions: For Research Use only

Handling

Format: Liquid

Concentration: 0.5 mg/mL

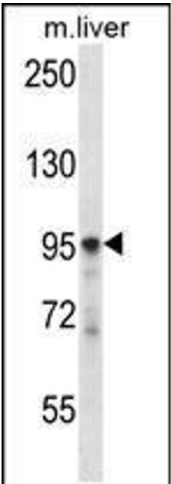
Buffer: Supplied in PBS with 0.09 % (W/V) sodium azide.

Preservative: Sodium azide

Precaution of Use: This product contains Sodium azide: a POISONOUS AND HAZARDOUS SUBSTANCE which should be handled by trained staff only.

Storage: 4 °C,-20 °C

Storage Comment: Store at 4°C for three months and -20°C, stable for up to one year. As with all antibodies care should be taken to avoid repeated freeze thaw cycles. Antibodies should not be exposed to prolonged high temperatures.



Western Blotting

Image 1. Western blot analysis in mouse liver tissue lysates (35ug/lane).