

Datasheet for ABIN5533296
anti-GTF2E2 antibody (C-Term)[Go to Product page](#)

2 Images

Overview

Quantity:	400 µL
Target:	GTF2E2
Binding Specificity:	AA 240-269, C-Term
Reactivity:	Human
Host:	Rabbit
Clonality:	Polyclonal
Conjugate:	This GTF2E2 antibody is un-conjugated
Application:	Western Blotting (WB)

Product Details

Immunogen:	This GTF2E2 antibody is generated from rabbits immunized with a KLH conjugated synthetic peptide between 240-269 amino acids from the C-terminal region of human GTF2E2.
Isotype:	Ig Fraction
Purification:	This antibody is purified through a protein A column, followed by peptide affinity purification.

Target Details

Target:	GTF2E2
Alternative Name:	GTF2E2 (GTF2E2 Products)
Background:	GTF2E2 recruits TFIIH to the initiation complex and stimulates the RNA polymerase II C-terminal domain kinase and DNA-dependent ATPase activities of TFIIH. Both TFIIH and TFIIIE are required for promoter clearance by RNA polymerase.

Target Details

Molecular Weight:	33 kDa
Gene ID:	2961
UniProt:	P29084

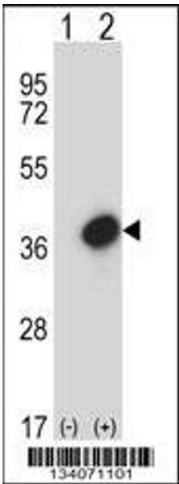
Application Details

Application Notes:	For WB starting dilution is: 1:1000
Restrictions:	For Research Use only

Handling

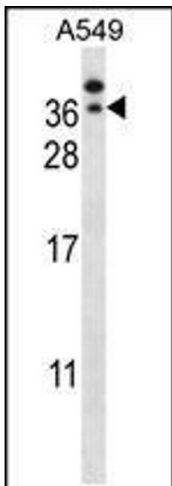
Format:	Liquid
Concentration:	0.5 mg/mL
Buffer:	Supplied in PBS with 0.09 % (W/V) sodium azide.
Preservative:	Sodium azide
Precaution of Use:	This product contains Sodium azide: a POISONOUS AND HAZARDOUS SUBSTANCE which should be handled by trained staff only.
Storage:	4 °C, -20 °C
Storage Comment:	Store at 4°C for three months and -20°C, stable for up to one year. As with all antibodies care should be taken to avoid repeated freeze thaw cycles. Antibodies should not be exposed to prolonged high temperatures.

Images



Western Blotting

Image 1. Western blot analysis of GTF2E2 using rabbit polyclonal GTF2E2 Antibody using 293 cell lysates (2 ug/lane) either nontransfected (Lane 1) or transiently transfected (Lane 2) with the GTF2E2 gene.



Western Blotting

Image 2. Western blot analysis in A549 cell line lysates (35ug/lane).