

Datasheet for ABIN5533303
anti-TCEA2 antibody (AA 86-115)



[Go to Product page](#)

1 Image

Overview

Quantity:	400 µL
Target:	TCEA2
Binding Specificity:	AA 86-115
Reactivity:	Human
Host:	Rabbit
Clonality:	Polyclonal
Conjugate:	This TCEA2 antibody is un-conjugated
Application:	Western Blotting (WB)

Product Details

Immunogen:	This TCEA2 antibody is generated from rabbits immunized with a KLH conjugated synthetic peptide between 86-115 amino acids from the Central region of human TCEA2.
Isotype:	Ig Fraction
Purification:	This antibody is purified through a protein A column, followed by peptide affinity purification.

Target Details

Target:	TCEA2
Alternative Name:	TCEA2 (TCEA2 Products)
Background:	The protein encoded by this gene is found in the nucleus, where it functions as an SII class transcription elongation factor. Elongation factors in this class are responsible for releasing RNA polymerase II ternary complexes from transcriptional arrest at template-encoded arresting

Target Details

sites. The encoded protein has been shown to interact with general transcription factor IIB, a basal transcription factor. Two transcript variants encoding different isoforms have been found for this gene.

Molecular Weight: 34 kDa

Gene ID: 6919

UniProt: [Q15560](#)

Application Details

Application Notes: For WB starting dilution is: 1:1000

Restrictions: For Research Use only

Handling

Format: Liquid

Concentration: 0.5 mg/mL

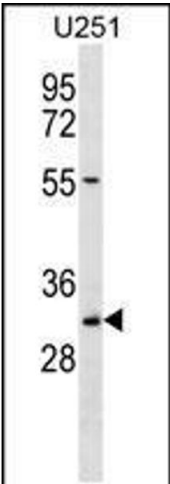
Buffer: Supplied in PBS with 0.09 % (W/V) sodium azide.

Preservative: Sodium azide

Precaution of Use: This product contains Sodium azide: a POISONOUS AND HAZARDOUS SUBSTANCE which should be handled by trained staff only.

Storage: 4 °C, -20 °C

Storage Comment: Store at 4°C for three months and -20°C, stable for up to one year. As with all antibodies care should be taken to avoid repeated freeze thaw cycles. Antibodies should not be exposed to prolonged high temperatures.



Western Blotting

Image 1. Western blot analysis in U251 cell line lysates (35ug/lane).