

Datasheet for ABIN5533368
anti-MED25 antibody (N-Term)

3 Images

[Go to Product page](#)

Overview

Quantity:	400 µL
Target:	MED25
Binding Specificity:	AA 112-140, N-Term
Reactivity:	Human, Mouse
Host:	Rabbit
Clonality:	Polyclonal
Conjugate:	This MED25 antibody is un-conjugated
Application:	Western Blotting (WB), Immunohistochemistry (Paraffin-embedded Sections) (IHC (p))

Product Details

Immunogen:	This MED25 antibody is generated from rabbits immunized with a KLH conjugated synthetic peptide between 112-140 amino acids from the N-terminal region of human MED25.
Isotype:	Ig Fraction
Purification:	This antibody is purified through a protein A column, followed by peptide affinity purification.

Target Details

Target:	MED25
Alternative Name:	MED25 (MED25 Products)
Background:	This gene encodes a component of the transcriptional coactivator complex termed the Mediator complex. This complex is required for transcription of most RNA polymerase II-dependent genes. The encoded protein plays a role in chromatin modification and in

Target Details

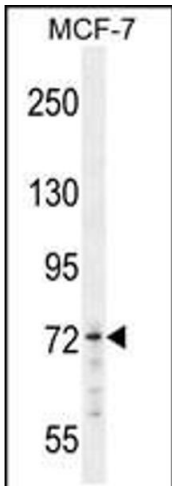
	preinitiation complex assembly. Mutations in this gene are associated with Charcot-Marie-Tooth disease type 2B2. [provided by RefSeq].
Molecular Weight:	78 kDa
Gene ID:	81857
UniProt:	Q71SY5
Pathways:	Nuclear Hormone Receptor Binding , Chromatin Binding , Regulation of Lipid Metabolism by PPARalpha , Production of Molecular Mediator of Immune Response

Application Details

Application Notes:	For WB starting dilution is: 1:1000
	For IHC-P starting dilution is: 1:50~100
Restrictions:	For Research Use only

Handling

Format:	Liquid
Concentration:	0.5 mg/mL
Buffer:	Supplied in PBS with 0.09 % (W/V) sodium azide.
Preservative:	Sodium azide
Precaution of Use:	This product contains Sodium azide: a POISONOUS AND HAZARDOUS SUBSTANCE which should be handled by trained staff only.
Storage:	4 °C, -20 °C
Storage Comment:	Store at 4°C for three months and -20°C, stable for up to one year. As with all antibodies care should be taken to avoid repeated freeze thaw cycles. Antibodies should not be exposed to prolonged high temperatures.



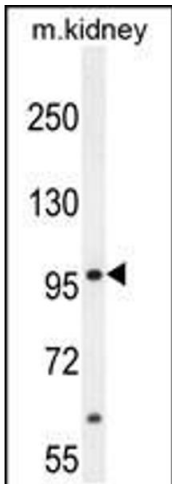
Western Blotting

Image 1. Western blot analysis in MCF-7 cell line lysates (35ug/lane). This demonstrates the detection of the MED25 protein (arrow).



Immunohistochemistry

Image 2. MED25 antibody immunohistochemistry analysis in formalin fixed and paraffin embedded human brain tissue followed by peroxidase conjugation of the secondary antibody and DAB staining.



Western Blotting

Image 3. Western blot analysis in mouse kidney tissue lysates (35ug/lane).