

Datasheet for ABIN5533370
anti-MED16 antibody (AA 253-281)



[Go to Product page](#)

1 Image

Overview

Quantity:	400 µL
Target:	MED16
Binding Specificity:	AA 253-281
Reactivity:	Human
Host:	Rabbit
Clonality:	Polyclonal
Conjugate:	This MED16 antibody is un-conjugated
Application:	Western Blotting (WB)

Product Details

Immunogen:	This MED16 antibody is generated from rabbits immunized with a KLH conjugated synthetic peptide between 253-281 amino acids from the Central region of human MED16.
Isotype:	Ig Fraction
Purification:	This antibody is purified through a protein A column, followed by peptide affinity purification.

Target Details

Target:	MED16
Alternative Name:	MED16 (MED16 Products)
Background:	Component of the Mediator complex, a coactivator involved in the regulated transcription of nearly all RNA polymerase II-dependent genes. Mediator functions as a bridge to convey information from gene-specific regulatory proteins to the basal RNA polymerase II transcription

Target Details

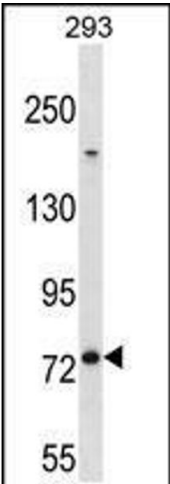
	machinery. Mediator is recruited to promoters by direct interactions with regulatory proteins and serves as a scaffold for the assembly of a functional preinitiation complex with RNA polymerase II and the general transcription factors.
Molecular Weight:	97 kDa
Gene ID:	10025
UniProt:	Q9Y2X0
Pathways:	Intracellular Steroid Hormone Receptor Signaling Pathway , Nuclear Hormone Receptor Binding , Regulation of Lipid Metabolism by PPARalpha

Application Details

Application Notes:	For WB starting dilution is: 1:1000
Restrictions:	For Research Use only

Handling

Format:	Liquid
Concentration:	0.5 mg/mL
Buffer:	Supplied in PBS with 0.09 % (W/V) sodium azide.
Preservative:	Sodium azide
Precaution of Use:	This product contains Sodium azide: a POISONOUS AND HAZARDOUS SUBSTANCE which should be handled by trained staff only.
Storage:	4 °C,-20 °C
Storage Comment:	Store at 4°C for three months and -20°C, stable for up to one year. As with all antibodies care should be taken to avoid repeated freeze thaw cycles. Antibodies should not be exposed to prolonged high temperatures.



Western Blotting

Image 1. Western blot analysis in 293 cell line lysates (35ug/lane).