

Datasheet for ABIN5533371
anti-MED17 antibody (AA 332-361)



[Go to Product page](#)

1 Image

Overview

Quantity:	400 µL
Target:	MED17
Binding Specificity:	AA 332-361
Reactivity:	Human
Host:	Rabbit
Clonality:	Polyclonal
Conjugate:	This MED17 antibody is un-conjugated
Application:	Western Blotting (WB)

Product Details

Immunogen:	This MED17 antibody is generated from rabbits immunized with a KLH conjugated synthetic peptide between 332-361 amino acids from the Central region of human MED17.
Isotype:	Ig Fraction
Purification:	This antibody is purified through a protein A column, followed by peptide affinity purification.

Target Details

Target:	MED17
Alternative Name:	MED17 (MED17 Products)
Background:	The activation of gene transcription is a multistep process that is triggered by factors that recognize transcriptional enhancer sites in DNA. These factors work with co-activators to direct transcriptional initiation by the RNA polymerase II apparatus. The protein encoded by this gene

Target Details

is a subunit of the CRSP (cofactor required for SP1 activation) complex, which, along with TFIIID, is required for efficient activation by SP1. This protein is also a component of other multisubunit complexes e.g. thyroid hormone receptor-(TR-) associated proteins which interact with TR and facilitate TR function on DNA templates in conjunction with initiation factors and cofactors.

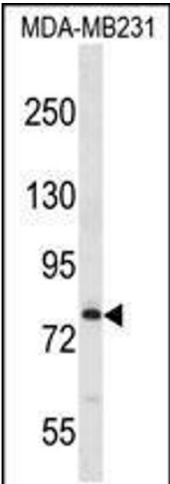
Molecular Weight:	73 kDa
Gene ID:	9440
UniProt:	Q9NVC6
Pathways:	Intracellular Steroid Hormone Receptor Signaling Pathway , Stem Cell Maintenance , Regulation of Lipid Metabolism by PPARalpha

Application Details

Application Notes:	For WB starting dilution is: 1:1000
Restrictions:	For Research Use only

Handling

Format:	Liquid
Concentration:	0.5 mg/mL
Buffer:	Supplied in PBS with 0.09 % (W/V) sodium azide.
Preservative:	Sodium azide
Precaution of Use:	This product contains Sodium azide: a POISONOUS AND HAZARDOUS SUBSTANCE which should be handled by trained staff only.
Storage:	4 °C,-20 °C
Storage Comment:	Store at 4°C for three months and -20°C, stable for up to one year. As with all antibodies care should be taken to avoid repeated freeze thaw cycles. Antibodies should not be exposed to prolonged high temperatures.



Western Blotting

Image 1. Western blot analysis in MDA-MB231 cell line lysates (35ug/lane).