

Datasheet for ABIN5533458
anti-NAT5 antibody (C-Term)[Go to Product page](#)

1 Image

Overview

| | |
|----------------------|-------------------------------------|
| Quantity: | 400 µL |
| Target: | NAT5 |
| Binding Specificity: | AA 127-155, C-Term |
| Reactivity: | Human |
| Host: | Rabbit |
| Clonality: | Polyclonal |
| Conjugate: | This NAT5 antibody is un-conjugated |
| Application: | Western Blotting (WB) |

Product Details

| | |
|---------------|----------------------------------------------------------------------------------------------------------------------------------------------------------------------|
| Immunogen: | This NAT5 antibody is generated from rabbits immunized with a KLH conjugated synthetic peptide between 127-155 amino acids from the C-terminal region of human NAT5. |
| Isotype: | Ig Fraction |
| Purification: | This antibody is purified through a protein A column, followed by peptide affinity purification. |

Target Details

| | |
|-------------------|----------------------------------------------------------------------------------------------------------------------------------------------------------------------------------------------------------------------------------------------------------|
| Target: | NAT5 |
| Alternative Name: | NAT5 (NAT5 Products) |
| Background: | NAT5 is a component of N-acetyltransferase complex B (NatB). Human NatB performs cotranslational N(alpha)-terminal acetylation of methionine residues when they are followed by asparagine (Starheim et al., 2008 [PubMed 18570629]).[supplied by OMIM]. |

Target Details

| | |
|-------------------|------------------------|
| Molecular Weight: | 20 kDa |
| Gene ID: | 51126 |
| UniProt: | P61599 |

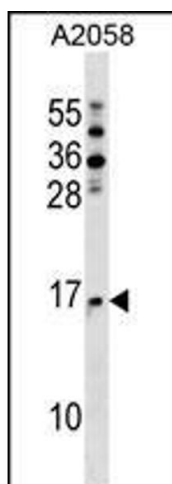
Application Details

| | |
|--------------------|-------------------------------------|
| Application Notes: | For WB starting dilution is: 1:1000 |
| Restrictions: | For Research Use only |

Handling

| | |
|--------------------|------------------------------------------------------------------------------------------------------------------------------------------------------------------------------------------------------------------------|
| Format: | Liquid |
| Concentration: | 0.5 mg/mL |
| Buffer: | Supplied in PBS with 0.09 % (W/V) sodium azide. |
| Preservative: | Sodium azide |
| Precaution of Use: | This product contains Sodium azide: a POISONOUS AND HAZARDOUS SUBSTANCE which should be handled by trained staff only. |
| Storage: | 4 °C, -20 °C |
| Storage Comment: | Store at 4°C for three months and -20°C, stable for up to one year. As with all antibodies care should be taken to avoid repeated freeze thaw cycles. Antibodies should not be exposed to prolonged high temperatures. |

Images



Western Blotting

Image 1. Western blot analysis in A2058 cell line lysates (35ug/lane).