



Datasheet for ABIN5533523
anti-PBX2 antibody (AA 181-210)



[Go to Product page](#)

2 Images

Overview

Quantity:	400 µL
Target:	PBX2
Binding Specificity:	AA 181-210
Reactivity:	Human, Mouse
Host:	Rabbit
Clonality:	Polyclonal
Conjugate:	This PBX2 antibody is un-conjugated
Application:	Western Blotting (WB)

Product Details

Immunogen:	This PBX2 antibody is generated from rabbits immunized with a KLH conjugated synthetic peptide between 181-210 amino acids from the Central region of human PBX2.
Isotype:	Ig Fraction
Purification:	This antibody is purified through a protein A column, followed by peptide affinity purification.

Target Details

Target:	PBX2
Alternative Name:	PBX2 (PBX2 Products)
Background:	This gene encodes a ubiquitously expressed member of the TALE/PBX homeobox family. It was identified by its similarity to a homeobox gene which is involved in t(1,19) translocation in acute pre-B-cell leukemias. This protein is a transcriptional activator which binds to the TLX1

Target Details

promoter. The gene is located within the major histocompatibility complex (MHC) on chromosome 6. [provided by RefSeq].

Molecular Weight: 46 kDa

Gene ID: 5089

UniProt: [P40425](#)

Pathways: [Skeletal Muscle Fiber Development](#)

Application Details

Application Notes: For WB starting dilution is: 1:1000

Restrictions: For Research Use only

Handling

Format: Liquid

Concentration: 0.5 mg/mL

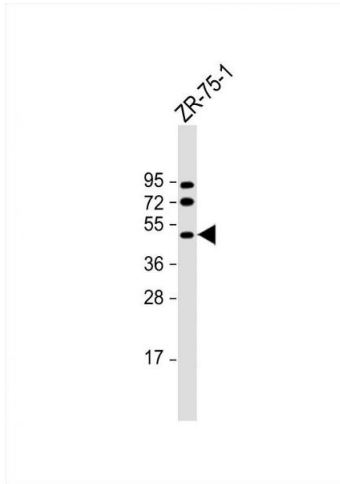
Buffer: Supplied in PBS with 0.09 % (W/V) sodium azide.

Preservative: Sodium azide

Precaution of Use: This product contains Sodium azide: a POISONOUS AND HAZARDOUS SUBSTANCE which should be handled by trained staff only.

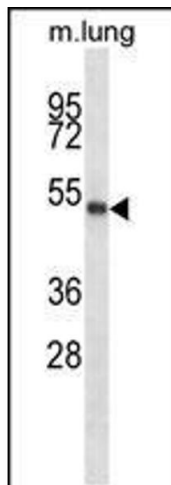
Storage: 4 °C, -20 °C

Storage Comment: Store at 4°C for three months and -20°C, stable for up to one year. As with all antibodies care should be taken to avoid repeated freeze thaw cycles. Antibodies should not be exposed to prolonged high temperatures.



Western Blotting

Image 1. Western Blot at 1:2000 dilution + ZR-75-1 whole cell lysates/proteins at 20 ug per lane.



Western Blotting

Image 2. Western blot analysis in mouse lung tissue lysates (35ug/lane).