

Datasheet for ABIN5533538  
**anti-MAS1 antibody (C-Term)**



[Go to Product page](#)

1 Image

## Overview

Quantity:	400 µL
Target:	MAS1
Binding Specificity:	AA 285-314, C-Term
Reactivity:	Human
Host:	Rabbit
Clonality:	Polyclonal
Conjugate:	This MAS1 antibody is un-conjugated
Application:	Western Blotting (WB)

## Product Details

Immunogen:	This MAS1 antibody is generated from rabbits immunized with a KLH conjugated synthetic peptide between 285-314 amino acids from the C-terminal region of human MAS1.
Isotype:	Ig Fraction
Purification:	This antibody is purified through a protein A column, followed by peptide affinity purification.

## Target Details

Target:	MAS1
Alternative Name:	MAS1 ( <a href="#">MAS1 Products</a> )
Background:	The structure of the MAS1 product indicates that it belongs to the class of receptors that are coupled to GTP-binding proteins and share a conserved structural motif, which is described as a '7-transmembrane segment' following the prediction that these hydrophobic segments form

## Target Details

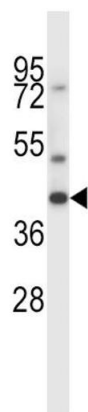
	membrane-spanning alpha-helices. The MAS1 protein may be a receptor that, when activated, modulates a critical component in a growth-regulating pathway to bring about oncogenic effects.
Molecular Weight:	37 kDa
Gene ID:	4142
UniProt:	<a href="#">P04201</a>
Pathways:	<a href="#">ACE Inhibitor Pathway</a> , <a href="#">Regulation of Carbohydrate Metabolic Process</a>

## Application Details

Application Notes:	For WB starting dilution is: 1:1000
Restrictions:	For Research Use only

## Handling

Format:	Liquid
Concentration:	0.35 mg/mL
Buffer:	Supplied in PBS with 0.09 % (W/V) sodium azide.
Preservative:	Sodium azide
Precaution of Use:	This product contains Sodium azide: a POISONOUS AND HAZARDOUS SUBSTANCE which should be handled by trained staff only.
Storage:	4 °C,-20 °C
Storage Comment:	Store at 4°C for three months and -20°C, stable for up to one year. As with all antibodies care should be taken to avoid repeated freeze thaw cycles. Antibodies should not be exposed to prolonged high temperatures.



Western Blotting

**Image 1.** Western blot analysis in CEM cell line lysates (35ug/lane).