



[Go to Product page](#)

Datasheet for ABIN5533549
anti-PPEF2 antibody (AA 304-333)

2 Images

Overview

Quantity:	400 µL
Target:	PPEF2
Binding Specificity:	AA 304-333
Reactivity:	Human
Host:	Rabbit
Clonality:	Polyclonal
Conjugate:	This PPEF2 antibody is un-conjugated
Application:	Western Blotting (WB), Immunohistochemistry (Paraffin-embedded Sections) (IHC (p))

Product Details

Immunogen:	This PPEF2 antibody is generated from rabbits immunized with a KLH conjugated synthetic peptide between 304-333 amino acids from the Central region of human PPEF2.
Isotype:	Ig Fraction
Purification:	This antibody is purified through a protein A column, followed by peptide affinity purification.

Target Details

Target:	PPEF2
Alternative Name:	PPEF2 (PPEF2 Products)
Background:	This gene encodes a member of the serine/threonine protein phosphatase with EF-hand motif family. The protein contains a protein phosphatase catalytic domain, and at least two EF-hand calcium-binding motifs in its C terminus. Although its substrate(s) is unknown, the encoded

Target Details

protein, which is expressed specifically in photoreceptors and the pineal, has been suggested to play a role in the visual system. This gene shares high sequence similarity with the *Drosophila* retinal degeneration C (rdgC) gene. [provided by RefSeq].

Molecular Weight: 87 kDa

Gene ID: 5470

UniProt: [O14830](#)

Application Details

Application Notes: For WB starting dilution is: 1:1000

For IHC-P starting dilution is: 1:10~50

Restrictions: For Research Use only

Handling

Format: Liquid

Concentration: 0.5 mg/mL

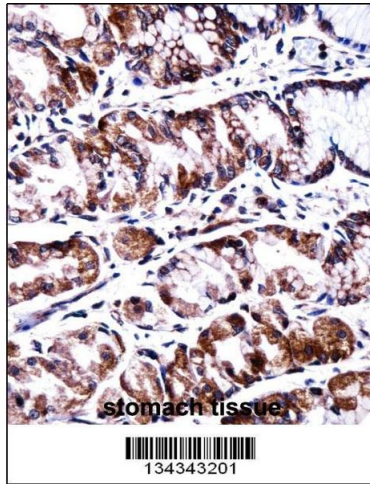
Buffer: Supplied in PBS with 0.09 % (W/V) sodium azide.

Preservative: Sodium azide

Precaution of Use: This product contains Sodium azide: a POISONOUS AND HAZARDOUS SUBSTANCE which should be handled by trained staff only.

Storage: 4 °C, -20 °C

Storage Comment: Store at 4°C for three months and -20°C, stable for up to one year. As with all antibodies care should be taken to avoid repeated freeze thaw cycles. Antibodies should not be exposed to prolonged high temperatures.



Immunohistochemistry

Image 1. PPEF2 Antibody immunohistochemistry analysis in formalin fixed and paraffin embedded human stomach tissue followed by peroxidase conjugation of the secondary antibody and DAB staining.

Western Blotting

Image 2. Western blot analysis of lysate from Y79 cell line, using PPEF2 Antibody at 1:1000 at each lane.

