

Datasheet for ABIN5533550
anti-PPEF1 antibody (AA 298-327)

2 Images

[Go to Product page](#)

Overview

Quantity:	400 µL
Target:	PPEF1
Binding Specificity:	AA 298-327
Reactivity:	Human
Host:	Rabbit
Clonality:	Polyclonal
Conjugate:	This PPEF1 antibody is un-conjugated
Application:	Western Blotting (WB)

Product Details

Immunogen:	This PPEF1 antibody is generated from rabbits immunized with a KLH conjugated synthetic peptide between 298-327 amino acids from the Central region of human PPEF1.
Isotype:	Ig Fraction
Purification:	This antibody is purified through a protein A column, followed by peptide affinity purification.

Target Details

Target:	PPEF1
Alternative Name:	PPEF1 (PPEF1 Products)
Background:	This gene encodes a member of the serine/threonine protein phosphatase with EF-hand motif family. The protein contains a protein phosphatase catalytic domain, and at least two EF-hand calcium-binding motifs in its C terminus. Although its substrate(s) is unknown, the encoded

Target Details

protein has been suggested to play a role in specific sensory neuron function and/or development. This gene shares high sequence similarity with the Drosophila retinal degeneration C (rdgC) gene. Several alternatively spliced transcript variants, each encoding a distinct isoform, have been described.

Molecular Weight: 76 kDa

Gene ID: 5475

UniProt: [O14829](#)

Pathways: [Regulation of G-Protein Coupled Receptor Protein Signaling](#)

Application Details

Application Notes: For WB starting dilution is: 1:1000

Restrictions: For Research Use only

Handling

Format: Liquid

Concentration: 0.45 mg/mL

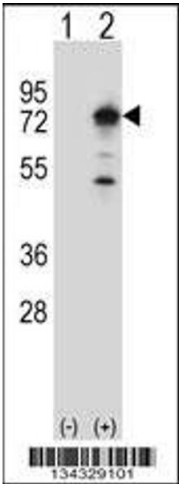
Buffer: Supplied in PBS with 0.09 % (W/V) sodium azide.

Preservative: Sodium azide

Precaution of Use: This product contains Sodium azide: a POISONOUS AND HAZARDOUS SUBSTANCE which should be handled by trained staff only.

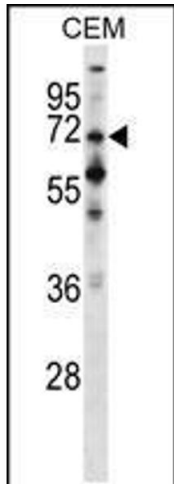
Storage: 4 °C,-20 °C

Storage Comment: Store at 4°C for three months and -20°C, stable for up to one year. As with all antibodies care should be taken to avoid repeated freeze thaw cycles. Antibodies should not be exposed to prolonged high temperatures.



Western Blotting

Image 1. Western blot analysis of PPEF1 using rabbit polyclonal PPEF1 Antibody using 293 cell lysates (2 ug/lane) either nontransfected (Lane 1) or transiently transfected (Lane 2) with the PPEF1 gene.



Western Blotting

Image 2. Western blot analysis in CEM cell line lysates (35ug/lane).