

Datasheet for ABIN5533563
anti-ETV2 antibody (N-Term)



[Go to Product page](#)

1 Image

Overview

Quantity:	400 µL
Target:	ETV2
Binding Specificity:	AA 62-90, N-Term
Reactivity:	Human
Host:	Rabbit
Clonality:	Polyclonal
Conjugate:	This ETV2 antibody is un-conjugated
Application:	Western Blotting (WB)

Product Details

Immunogen:	This ETV2 antibody is generated from rabbits immunized with a KLH conjugated synthetic peptide between 62-90 amino acids from the N-terminal region of human ETV2.
Isotype:	Ig Fraction
Purification:	This antibody is purified through a protein A column, followed by peptide affinity purification.

Target Details

Target:	ETV2
Alternative Name:	ETV2 (ETV2 Products)
Background:	Binds to DNA sequences containing the consensus pentanucleotide 5'-CGGA[AT]-3' (By similarity).

Target Details

Molecular Weight:	37 kDa
Gene ID:	2116
UniProt:	O00321

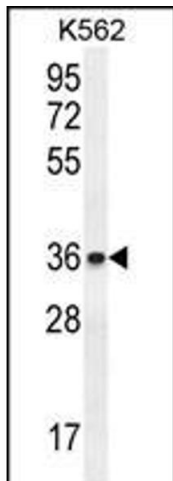
Application Details

Application Notes:	For WB starting dilution is: 1:1000
Restrictions:	For Research Use only

Handling

Format:	Liquid
Concentration:	0.25 mg/mL
Buffer:	Supplied in PBS with 0.09 % (W/V) sodium azide.
Preservative:	Sodium azide
Precaution of Use:	This product contains Sodium azide: a POISONOUS AND HAZARDOUS SUBSTANCE which should be handled by trained staff only.
Storage:	4 °C, -20 °C
Storage Comment:	Store at 4°C for three months and -20°C, stable for up to one year. As with all antibodies care should be taken to avoid repeated freeze thaw cycles. Antibodies should not be exposed to prolonged high temperatures.

Images



Western Blotting

Image 1. Western blot analysis in K562 cell line lysates (35ug/lane).