

Datasheet for ABIN5533567
anti-Epsin 1 antibody (AA 203-232)



[Go to Product page](#)

1 Image

Overview

Quantity:	400 µL
Target:	Epsin 1 (EPN1)
Binding Specificity:	AA 203-232
Reactivity:	Human
Host:	Rabbit
Clonality:	Polyclonal
Conjugate:	This Epsin 1 antibody is un-conjugated
Application:	Western Blotting (WB)

Product Details

Immunogen:	This EPN1 antibody is generated from rabbits immunized with a KLH conjugated synthetic peptide between 203-232 amino acids from the Central region of human EPN1.
Isotype:	Ig Fraction
Purification:	This antibody is purified through a protein A column, followed by peptide affinity purification.

Target Details

Target:	Epsin 1 (EPN1)
Alternative Name:	EPN1 (EPN1 Products)
Background:	EPN1 is an endocytic accessory protein that interacts with EPS15 (MIM 600051), the alpha subunit of the clathrin adaptor AP2 (AP2A1, MIM 601026), and clathrin (see MIM 118960), as well as with other accessory proteins for the endocytosis of clathrin-coated vesicles.

Target Details

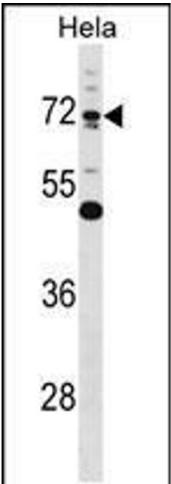
Molecular Weight:	60 kDa
Gene ID:	29924
UniProt:	Q9Y6I3
Pathways:	EGFR Signaling Pathway , EGFR Downregulation

Application Details

Application Notes:	For WB starting dilution is: 1:1000
Restrictions:	For Research Use only

Handling

Format:	Liquid
Concentration:	0.5 mg/mL
Buffer:	Supplied in PBS with 0.09 % (W/V) sodium azide.
Preservative:	Sodium azide
Precaution of Use:	This product contains Sodium azide: a POISONOUS AND HAZARDOUS SUBSTANCE which should be handled by trained staff only.
Storage:	4 °C,-20 °C
Storage Comment:	Store at 4°C for three months and -20°C, stable for up to one year. As with all antibodies care should be taken to avoid repeated freeze thaw cycles. Antibodies should not be exposed to prolonged high temperatures.



Western Blotting

Image 1. Western blot analysis in Hela cell line lysates (35ug/lane).