

Datasheet for ABIN5533603
anti-EPO antibody (AA 329-357)



[Go to Product page](#)

3 Images

Overview

Quantity:	400 µL
Target:	EPO
Binding Specificity:	AA 329-357
Reactivity:	Human
Host:	Rabbit
Clonality:	Polyclonal
Conjugate:	This EPO antibody is un-conjugated
Application:	Western Blotting (WB), Flow Cytometry (FACS), Immunofluorescence (IF)

Product Details

Immunogen:	This EPOR antibody is generated from rabbits immunized with a KLH conjugated synthetic peptide between 329-357 amino acids from the Central region of human EPOR.
Isotype:	Ig Fraction
Purification:	This antibody is purified through a protein A column, followed by peptide affinity purification.

Target Details

Target:	EPO
Alternative Name:	EPO (EPO Products)
Target Type:	Hormone
Background:	This gene encodes the erythropoietin receptor which is a member of the cytokine receptor

Target Details

family. Upon erythropoietin binding, this receptor activates Jak2 tyrosine kinase which activates different intracellular pathways including: Ras/MAP kinase, phosphatidylinositol 3-kinase and STAT transcription factors. The stimulated erythropoietin receptor appears to have a role in erythroid cell survival. Defects in the erythropoietin receptor may produce erythroleukemia and familial erythrocytosis. Dysregulation of this gene may affect the growth of certain tumors. Alternate splicing results in multiple transcript variants.

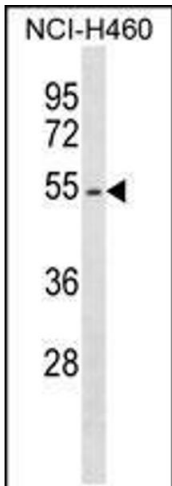
Molecular Weight:	55 kDa
Gene ID:	2057
UniProt:	P19235
Pathways:	JAK-STAT Signaling , Hormone Activity , Negative Regulation of intrinsic apoptotic Signaling , Negative Regulation of Transporter Activity

Application Details

Application Notes:	For WB starting dilution is: 1:1000 For FACS starting dilution is: 1:10~50 For IF starting dilution is: 1:10~50
Restrictions:	For Research Use only

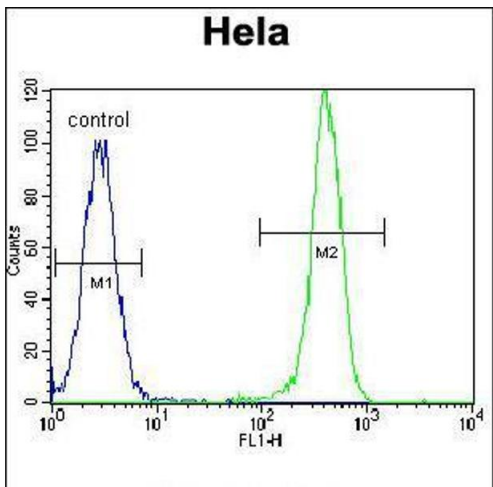
Handling

Format:	Liquid
Concentration:	0.3 mg/mL
Buffer:	Supplied in PBS with 0.09 % (W/V) sodium azide.
Preservative:	Sodium azide
Precaution of Use:	This product contains Sodium azide: a POISONOUS AND HAZARDOUS SUBSTANCE which should be handled by trained staff only.
Storage:	4 °C, -20 °C
Storage Comment:	Store at 4°C for three months and -20°C, stable for up to one year. As with all antibodies care should be taken to avoid repeated freeze thaw cycles. Antibodies should not be exposed to prolonged high temperatures.



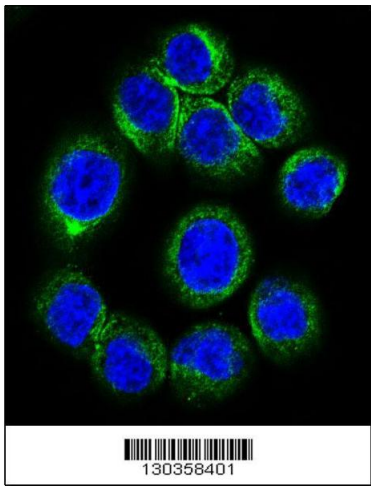
Western Blotting

Image 1. Western blot analysis in NCI-H460 cell line lysates (35ug/lane).



Flow Cytometry

Image 2. Flow cytometric analysis of HeLa cells (right histogram) compared to a negative control cell (left histogram). FITC-conjugated goat-anti-rabbit secondary antibodies were used for the analysis.



Immunofluorescence

Image 3. Confocal immunofluorescent analysis of EPOR Antibody with HeLa cell followed by Alexa Fluor 488-conjugated goat anti-rabbit IgG (green). DAPI was used to stain the cell nuclear (blue).