

Datasheet for ABIN5533604
anti-EPO antibody (N-Term)



[Go to Product page](#)

3 Images

Overview

Quantity:	400 µL
Target:	EPO
Binding Specificity:	AA 20-48, N-Term
Reactivity:	Human, Mouse, Rat
Host:	Rabbit
Clonality:	Polyclonal
Conjugate:	This EPO antibody is un-conjugated
Application:	Western Blotting (WB)

Product Details

Immunogen:	This Erythropoietin antibody is generated from rabbits immunized with a KLH conjugated synthetic peptide between 20-48 amino acids from the N-terminal region of human Erythropoietin.
Isotype:	Ig Fraction
Purification:	This antibody is purified through a protein A column, followed by peptide affinity purification.

Target Details

Target:	EPO
Alternative Name:	Erythropoietin (EPO Products)
Target Type:	Hormone

Target Details

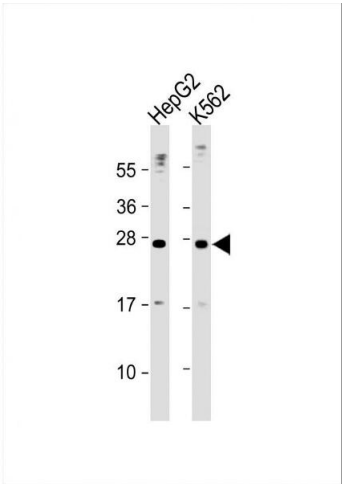
Background:	EPO is a member of the EPO/TPO family and encodes a secreted, glycosylated cytokine composed of four alpha helical bundles. The protein is found in the plasma and regulates red cell production by promoting erythroid differentiation and initiating hemoglobin synthesis. This protein also has neuroprotective activity against a variety of potential brain injuries and antiapoptotic functions in several tissue types. [provided by RefSeq].
Molecular Weight:	21 kDa
Gene ID:	2056
UniProt:	P01588
Pathways:	JAK-STAT Signaling , Hormone Activity , Negative Regulation of intrinsic apoptotic Signaling , Negative Regulation of Transporter Activity

Application Details

Application Notes:	For WB starting dilution is: 1:2000
Restrictions:	For Research Use only

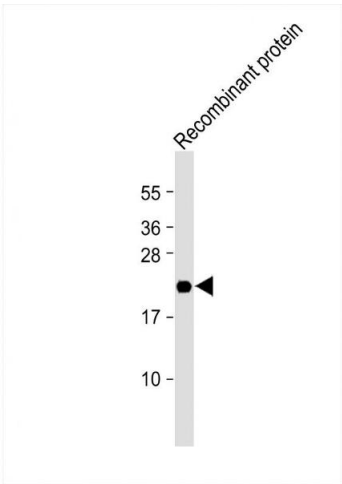
Handling

Format:	Liquid
Concentration:	0.5 mg/mL
Buffer:	Supplied in PBS with 0.09 % (W/V) sodium azide.
Preservative:	Sodium azide
Precaution of Use:	This product contains Sodium azide: a POISONOUS AND HAZARDOUS SUBSTANCE which should be handled by trained staff only.
Storage:	4 °C,-20 °C
Storage Comment:	Store at 4°C for three months and -20°C, stable for up to one year. As with all antibodies care should be taken to avoid repeated freeze thaw cycles. Antibodies should not be exposed to prolonged high temperatures.



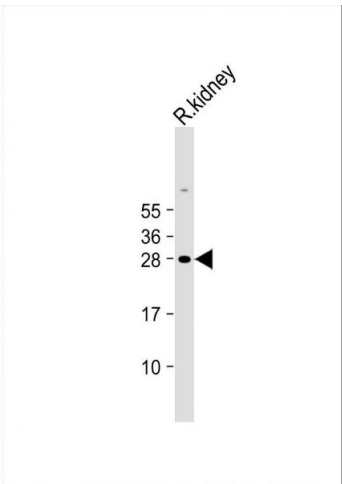
Western Blotting

Image 1. Western Blot at 1:2000 dilution Lane 1: HepG2 whole cell lysate Lane 2: K562 whole cell lysate Lysates/proteins at 20 ug per lane.



Western Blotting

Image 2. Western Blot at 1:2000 dilution + Recombinant human EPO protein Lysates/proteins at 20 ug per lane.



Western Blotting

Image 3. Western Blot at 1:2000 dilution + Rat kidney lysate Lysates/proteins at 20 ug per lane.