

Datasheet for ABIN5533613
anti-Cytokeratin 28 antibody (C-Term)[Go to Product page](#)

1 Image

Overview

Quantity:	400 µL
Target:	Cytokeratin 28 (KRT28)
Binding Specificity:	AA 432-460, C-Term
Reactivity:	Human
Host:	Rabbit
Clonality:	Polyclonal
Conjugate:	This Cytokeratin 28 antibody is un-conjugated
Application:	Western Blotting (WB)

Product Details

Immunogen:	This KRT28 antibody is generated from rabbits immunized with a KLH conjugated synthetic peptide between 432-460 amino acids from the C-terminal region of human KRT28.
Isotype:	Ig Fraction
Purification:	This antibody is purified through a protein A column, followed by peptide affinity purification.

Target Details

Target:	Cytokeratin 28 (KRT28)
Alternative Name:	KRT28 (KRT28 Products)
Background:	This gene encodes a member of the type I (acidic) keratin family, which belongs to the superfamily of intermediate filament (IF) proteins. Keratins are heteropolymeric structural proteins which form the intermediate filament. These filaments, along with actin

Target Details

microfilaments and microtubules, compose the cytoskeleton of epithelial cells. The type I keratin genes are clustered in a region of chromosome 17q12-q21.

Molecular Weight: 51 kDa

Gene ID: 162605

UniProt: [Q7Z3Y7](#)

Application Details

Application Notes: For WB starting dilution is: 1:1000

Restrictions: For Research Use only

Handling

Format: Liquid

Concentration: 0.5 mg/mL

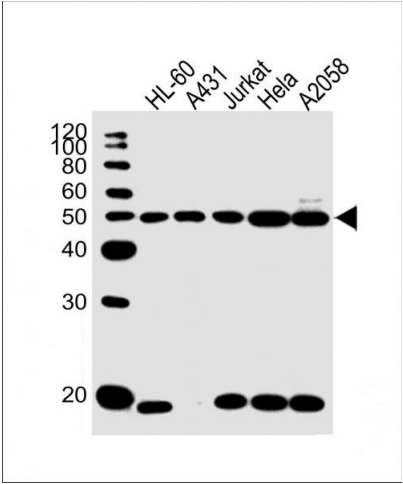
Buffer: Supplied in PBS with 0.09 % (W/V) sodium azide.

Preservative: Sodium azide

Precaution of Use: This product contains Sodium azide: a POISONOUS AND HAZARDOUS SUBSTANCE which should be handled by trained staff only.

Storage: 4 °C, -20 °C

Storage Comment: Store at 4°C for three months and -20°C, stable for up to one year. As with all antibodies care should be taken to avoid repeated freeze thaw cycles. Antibodies should not be exposed to prolonged high temperatures.



Western Blotting

Image 1. Western Blot at 1:1000 dilution Lane 1: HL-60 whole cell lysate Lane 2: A431 whole cell lysate Lane 3: Jurkat whole cell lysate Lane 4: Hela whole cell lysate Lane 5: A2058 whole cell lysate Lysates/proteins at 20 ug per lane.