

Datasheet for ABIN5533615
anti-SIX3 antibody (AA 138-166)



[Go to Product page](#)

1 Image

Overview

Quantity:	400 µL
Target:	SIX3
Binding Specificity:	AA 138-166
Reactivity:	Human
Host:	Rabbit
Clonality:	Polyclonal
Conjugate:	This SIX3 antibody is un-conjugated
Application:	Western Blotting (WB)

Product Details

Immunogen:	This SIX3 antibody is generated from rabbits immunized with a KLH conjugated synthetic peptide between 138-166 amino acids from the Central region of human SIX3.
Isotype:	Ig Fraction
Purification:	This antibody is purified through a protein A column, followed by peptide affinity purification.

Target Details

Target:	SIX3
Alternative Name:	SIX3 (SIX3 Products)
Background:	This gene encodes a member of the sine oculis homeobox transcription factor family. The encoded protein plays a role in eye development. Mutations in this gene have been associated with holoprosencephaly type 2.

Target Details

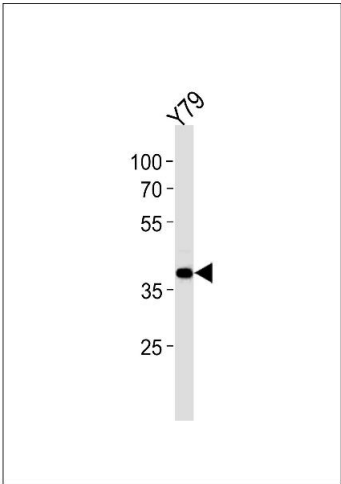
Molecular Weight:	35 kDa
Gene ID:	6496
UniProt:	O95343
Pathways:	Protein targeting to Nucleus

Application Details

Application Notes:	For WB starting dilution is: 1:1000
Restrictions:	For Research Use only

Handling

Format:	Liquid
Concentration:	0.5 mg/mL
Buffer:	Supplied in PBS with 0.09 % (W/V) sodium azide.
Preservative:	Sodium azide
Precaution of Use:	This product contains Sodium azide: a POISONOUS AND HAZARDOUS SUBSTANCE which should be handled by trained staff only.
Storage:	4 °C,-20 °C
Storage Comment:	Store at 4°C for three months and -20°C, stable for up to one year. As with all antibodies care should be taken to avoid repeated freeze thaw cycles. Antibodies should not be exposed to prolonged high temperatures.



Western Blotting

Image 1. Western blot analysis in Y79 cell line lysates (35ug/lane).