

Datasheet for ABIN5533656
anti-Acsl3 antibody (C-Term)[Go to Product page](#)

1 Image

Overview

Quantity:	400 µL
Target:	Acsl3
Binding Specificity:	AA 528-556, C-Term
Reactivity:	Human
Host:	Rabbit
Clonality:	Polyclonal
Conjugate:	This Acsl3 antibody is un-conjugated
Application:	Western Blotting (WB)

Product Details

Immunogen:	This ACSL3 antibody is generated from rabbits immunized with a KLH conjugated synthetic peptide between 528-556 amino acids from the C-terminal region of human ACSL3.
Isotype:	Ig Fraction
Purification:	This antibody is purified through a protein A column, followed by peptide affinity purification.

Target Details

Target:	Acsl3
Alternative Name:	ACSL3 (Acsl3 Products)
Background:	The protein encoded by this gene is an isozyme of the long-chain fatty-acid-coenzyme A ligase family. Although differing in substrate specificity, subcellular localization, and tissue distribution, all isozymes of this family convert free long-chain fatty acids into fatty acyl-CoA

Target Details

esters, and thereby play a key role in lipid biosynthesis and fatty acid degradation. This isozyme is highly expressed in brain, and preferentially utilizes myristate, arachidonate, and eicosapentaenoate as substrates. The amino acid sequence of this isozyme is 92 % identical to that of rat homolog. Two transcript variants encoding the same protein have been found for this gene.

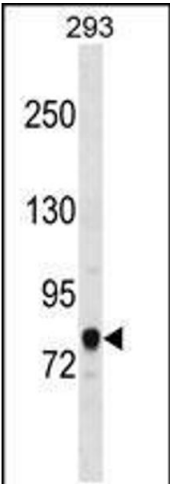
Molecular Weight:	80 kDa
Gene ID:	2181
UniProt:	O95573
Pathways:	SARS-CoV-2 Protein Interactome

Application Details

Application Notes:	For WB starting dilution is: 1:1000
Restrictions:	For Research Use only

Handling

Format:	Liquid
Concentration:	0.5 mg/mL
Buffer:	Supplied in PBS with 0.09 % (W/V) sodium azide.
Preservative:	Sodium azide
Precaution of Use:	This product contains Sodium azide: a POISONOUS AND HAZARDOUS SUBSTANCE which should be handled by trained staff only.
Storage:	4 °C, -20 °C
Storage Comment:	Store at 4°C for three months and -20°C, stable for up to one year. As with all antibodies care should be taken to avoid repeated freeze thaw cycles. Antibodies should not be exposed to prolonged high temperatures.



Western Blotting

Image 1. Western blot analysis in 293 cell line lysates (35ug/lane).