

Datasheet for ABIN5533672
anti-ARL2 antibody (AA 54-82)[Go to Product page](#)

2 Images

Overview

Quantity:	400 µL
Target:	ARL2
Binding Specificity:	AA 54-82
Reactivity:	Human
Host:	Rabbit
Clonality:	Polyclonal
Conjugate:	This ARL2 antibody is un-conjugated
Application:	Western Blotting (WB)

Product Details

Immunogen:	This ARL2 antibody is generated from rabbits immunized with a KLH conjugated synthetic peptide between 54-82 amino acids from the Central region of human ARL2.
Isotype:	Ig Fraction
Purification:	This antibody is purified through a protein A column, followed by peptide affinity purification.

Target Details

Target:	ARL2
Alternative Name:	ARL2 (ARL2 Products)
Background:	This gene encodes a small GTP-binding protein of the RAS superfamily which functions as an ADP-ribosylation factor (ARF). The encoded protein is one of a functionally distinct group of ARF-like genes.

Target Details

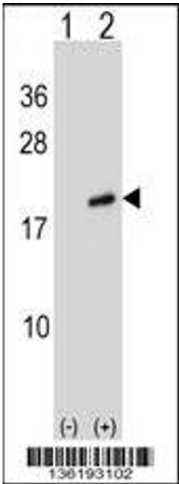
Molecular Weight:	21 kDa
Gene ID:	402
UniProt:	P36404
Pathways:	Cell-Cell Junction Organization , Maintenance of Protein Location

Application Details

Application Notes:	For WB starting dilution is: 1:1000
Restrictions:	For Research Use only

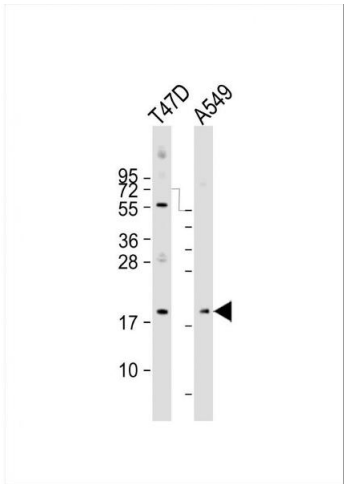
Handling

Format:	Liquid
Concentration:	0.5 mg/mL
Buffer:	Supplied in PBS with 0.09 % (W/V) sodium azide.
Preservative:	Sodium azide
Precaution of Use:	This product contains Sodium azide: a POISONOUS AND HAZARDOUS SUBSTANCE which should be handled by trained staff only.
Storage:	4 °C,-20 °C
Storage Comment:	Store at 4°C for three months and -20°C, stable for up to one year. As with all antibodies care should be taken to avoid repeated freeze thaw cycles. Antibodies should not be exposed to prolonged high temperatures.



Western Blotting

Image 1. Western blot analysis of ARL2 using rabbit polyclonal ARL2 Antibody using 293 cell lysates (2 ug/lane) either nontransfected (Lane 1) or transiently transfected (Lane 2) with the ARL2 gene.



Western Blotting

Image 2. Western Blot at 1:2000 dilution Lane 1: T47D whole cell lysate Lane 2: A549 whole cell lysate Lysates/proteins at 20 ug per lane.