

Datasheet for ABIN5533735
anti-ASK1 antibody (C-Term)

3 Images



[Go to Product page](#)

Overview

Quantity:	400 µL
Target:	ASK1 (MAP3K5)
Binding Specificity:	AA 1175-1203, C-Term
Reactivity:	Human, Mouse
Host:	Rabbit
Clonality:	Polyclonal
Conjugate:	This ASK1 antibody is un-conjugated
Application:	Western Blotting (WB), Immunohistochemistry (Paraffin-embedded Sections) (IHC (p))

Product Details

Immunogen:	This Mouse Map3k5 antibody is generated from rabbits immunized with a KLH conjugated synthetic peptide between 1175-1203 amino acids from the C-terminal region of mouse Map3k5.
Isotype:	Ig Fraction
Purification:	This antibody is purified through a protein A column, followed by peptide affinity purification.

Target Details

Target:	ASK1 (MAP3K5)
Alternative Name:	Map3k5 (MAP3K5 Products)
Background:	Component of a protein kinase signal transduction cascade. Phosphorylates and activates MAP2K4 and MAP2K6, which in turn activate the JNK and p38 MAP kinases, respectively.

Target Details

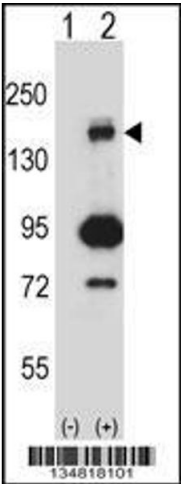
	Overexpression induces apoptotic cell death (By similarity).
Molecular Weight:	155 kDa
Gene ID:	26408
UniProt:	O35099
Pathways:	MAPK Signaling , Positive Regulation of Endopeptidase Activity , Unfolded Protein Response

Application Details

Application Notes:	For WB starting dilution is: 1:1000
	For IHC-P starting dilution is: 1:10~50
Restrictions:	For Research Use only

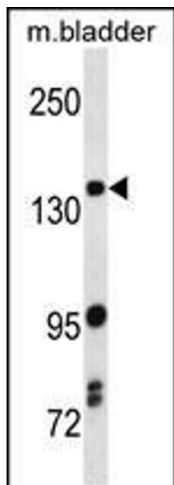
Handling

Format:	Liquid
Concentration:	0.29 mg/mL
Buffer:	Supplied in PBS with 0.09 % (W/V) sodium azide.
Preservative:	Sodium azide
Precaution of Use:	This product contains Sodium azide: a POISONOUS AND HAZARDOUS SUBSTANCE which should be handled by trained staff only.
Storage:	4 °C,-20 °C
Storage Comment:	Store at 4°C for three months and -20°C, stable for up to one year. As with all antibodies care should be taken to avoid repeated freeze thaw cycles. Antibodies should not be exposed to prolonged high temperatures.



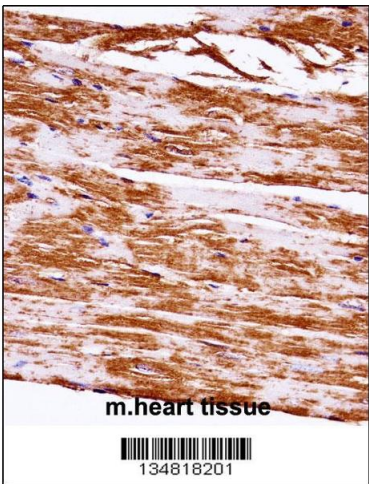
Western Blotting

Image 1. Western blot analysis of Map3k5 using rabbit polyclonal Mouse Map3k5 Antibody using 293 cell lysates (2 ug/lane) either nontransfected (Lane 1) or transiently transfected (Lane 2) with the Map3k5 gene.



Western Blotting

Image 2. Western blot analysis in mouse bladder tissue lysates (35ug/lane).



Immunohistochemistry

Image 3. Mouse Map3k5 Antibody immunohistochemistry analysis in formalin fixed and paraffin embedded mouse heart tissue followed by peroxidase conjugation of the secondary antibody and DAB staining.