

Datasheet for ABIN5533838
anti-CAMK2D antibody (C-Term)

3 Images

[Go to Product page](#)

Overview

Quantity:	400 µL
Target:	CAMK2D
Binding Specificity:	AA 448-478, C-Term
Reactivity:	Human, Monkey
Host:	Rabbit
Clonality:	Polyclonal
Conjugate:	This CAMK2D antibody is un-conjugated
Application:	Western Blotting (WB), Immunohistochemistry (Paraffin-embedded Sections) (IHC (p))

Product Details

Immunogen:	This CAMK2D (CAMK2 delta) antibody is generated from rabbits immunized with a KLH conjugated synthetic peptide between 448-478 amino acids from the C-terminal region of human CAMK2D (CAMK2 delta).
Isotype:	Ig Fraction
Purification:	This antibody is prepared by Saturated Ammonium Sulfate (SAS) precipitation followed by dialysis

Target Details

Target:	CAMK2D
Alternative Name:	CAMK2D (CAMK2D Products)
Background:	CaM-kinase II (CAMK2) is a prominent Ser/Thr protein kinase in the central nervous system that

Target Details

may function in long-term potentiation and neurotransmitter release. Likely autophosphorylation of Thr-286 allows the kinase to switch from a calmodulin-dependent to a calmodulin-independent state. CAMK2 is composed of four different chains: alpha, beta, gamma, and delta. The different isoforms assemble into homo- or heteromultimeric holoenzymes composed of 8 to 12 subunits. Expression of CAMK2 delta is significantly increased in patients suffering from dilated cardiomyopathy.

Molecular Weight: 56 kDa

Gene ID: 817

UniProt: [Q13557](#)

Pathways: [WNT Signaling](#), [Interferon-gamma Pathway](#), [Myometrial Relaxation and Contraction](#), [Smooth Muscle Cell Migration](#)

Application Details

Application Notes: For WB starting dilution is: 1:1000

For IHC-P starting dilution is: 1:50~100

Restrictions: For Research Use only

Handling

Format: Liquid

Concentration: 1.98 mg/mL

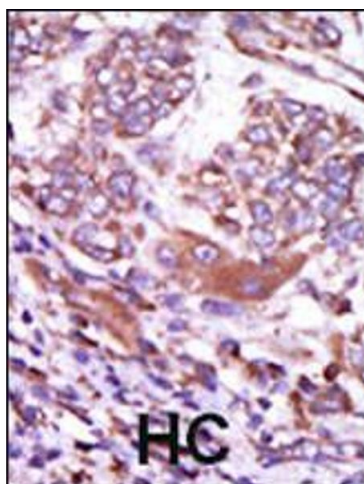
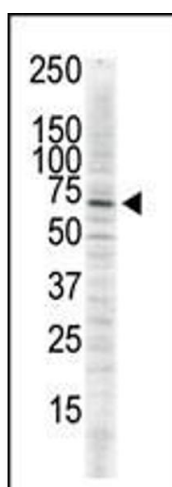
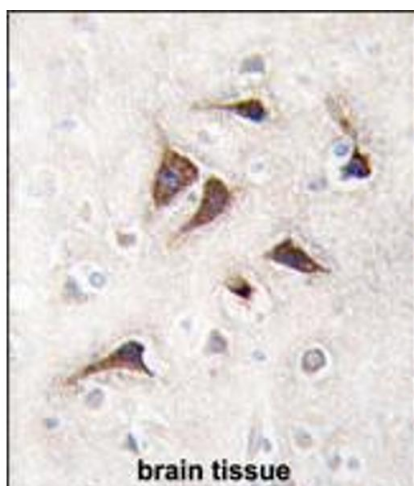
Buffer: Supplied in PBS with 0.09 % (W/V) sodium azide.

Preservative: Sodium azide

Precaution of Use: This product contains Sodium azide: a POISONOUS AND HAZARDOUS SUBSTANCE which should be handled by trained staff only.

Storage: 4 °C, -20 °C

Storage Comment: Store at 4°C for three months and -20°C, stable for up to one year. As with all antibodies care should be taken to avoid repeated freeze thaw cycles. Antibodies should not be exposed to prolonged high temperatures.



Immunohistochemistry

Image 1. Formalin-fixed and paraffin-embedded human brain tissue reacted with CAMK2 delta Antibody , which was peroxidase-conjugated to the secondary antibody, followed by DAB staining.

Western Blotting

Image 2. Antibody is used in Western blot to detect CAMK2 delta in serum-starved HeLa cell lysate.

Immunohistochemistry

Image 3. Formalin-fixed and paraffin-embedded human cancer tissue reacted with the primary antibody, which was peroxidase-conjugated to the secondary antibody, followed by AEC staining. BC = breast carcinoma; HC = hepatocarcinoma.