

Datasheet for ABIN5533844
anti-CAMKK2 antibody (N-Term)

3 Images

[Go to Product page](#)

Overview

| | |
|----------------------|---------------------------------------|
| Quantity: | 400 µL |
| Target: | CAMKK2 |
| Binding Specificity: | AA 43-71, N-Term |
| Reactivity: | Human, Mouse, Rat |
| Host: | Rabbit |
| Clonality: | Polyclonal |
| Conjugate: | This CAMKK2 antibody is un-conjugated |
| Application: | Western Blotting (WB) |

Product Details

| | |
|---------------|--|
| Immunogen: | This Mouse Camkk2 antibody is generated from rabbits immunized with a KLH conjugated synthetic peptide between 43-71 amino acids from the N-terminal region of mouse Camkk2. |
| Isotype: | Ig Fraction |
| Purification: | This antibody is purified through a protein A column, followed by peptide affinity purification. |

Target Details

| | |
|-------------------|--|
| Target: | CAMKK2 |
| Alternative Name: | Camkk2 (CAMKK2 Products) |
| Background: | Calcium/calmodulin-dependent protein kinase belonging to a proposed calcium-triggered signaling cascade involved in a number of cellular processes. Phosphorylates CAMK1, CAMK4 and CAMK1D (By similarity). Seems to be involved in hippocampal activation of CREB1. |

Target Details

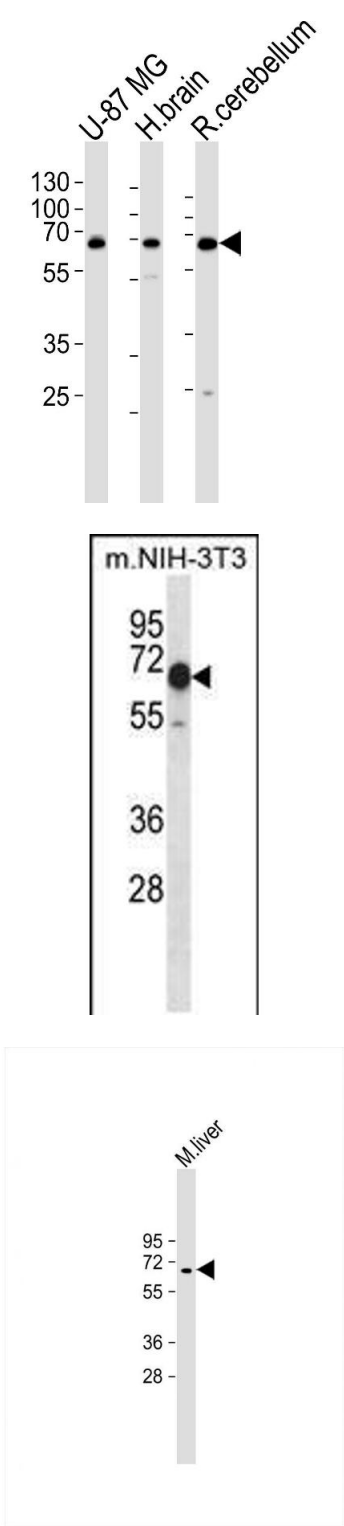
| | |
|-------------------|--------------------------------|
| Molecular Weight: | 65 kDa |
| Gene ID: | 207565 |
| UniProt: | Q8C078 |
| Pathways: | AMPK Signaling |

Application Details

| | |
|--------------------|-------------------------------------|
| Application Notes: | For WB starting dilution is: 1:1000 |
| Restrictions: | For Research Use only |

Handling

| | |
|--------------------|--|
| Format: | Liquid |
| Concentration: | 0.5 mg/mL |
| Buffer: | Supplied in PBS with 0.09 % (W/V) sodium azide. |
| Preservative: | Sodium azide |
| Precaution of Use: | This product contains Sodium azide: a POISONOUS AND HAZARDOUS SUBSTANCE which should be handled by trained staff only. |
| Storage: | 4 °C,-20 °C |
| Storage Comment: | Store at 4°C for three months and -20°C, stable for up to one year. As with all antibodies care should be taken to avoid repeated freeze thaw cycles. Antibodies should not be exposed to prolonged high temperatures. |



Western Blotting

Image 1. Western blot analysis of lysates from U-87 MG cell line , human brain and rat cerebellum tissue lysate(from left to right), using Mouse Camkk2 Antibody at 1:1000 at each lane.

Western Blotting

Image 2. Western blot analysis in mouse NIH-3T3 cell line lysates (35ug/lane).

Western Blotting

Image 3. Western Blot at 1:2000 dilution + mouse liver lysate Lysates/proteins at 20 ug per lane.