

Datasheet for ABIN5533911
anti-CLK2 antibody (N-Term)

3 Images

[Go to Product page](#)

Overview

Quantity:	400 µL
Target:	CLK2
Binding Specificity:	AA 66-93, N-Term
Reactivity:	Mouse
Host:	Rabbit
Clonality:	Polyclonal
Conjugate:	This CLK2 antibody is un-conjugated
Application:	Western Blotting (WB)

Product Details

Immunogen:	This Mouse Clk2 antibody is generated from rabbits immunized with a KLH conjugated synthetic peptide between 66-93 amino acids from the N-terminal region of mouse Clk2.
Isotype:	Ig Fraction
Purification:	This antibody is purified through a protein A column, followed by peptide affinity purification.

Target Details

Target:	CLK2
Alternative Name:	Clk2 (CLK2 Products)
Background:	Phosphorylates serine-and arginine-rich (SR) proteins of the spliceosomal complex may be a constituent of a network of regulatory mechanisms that enable SR proteins to control RNA splicing. Phosphorylates serines, threonines and tyrosines.

Target Details

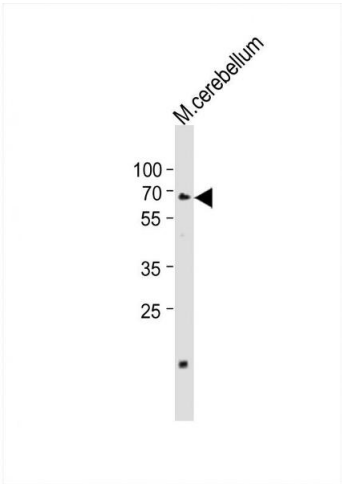
Molecular Weight:	60 kDa
Gene ID:	12748
UniProt:	O35491
Pathways:	Regulation of Carbohydrate Metabolic Process

Application Details

Application Notes:	For WB starting dilution is: 1:1000
Restrictions:	For Research Use only

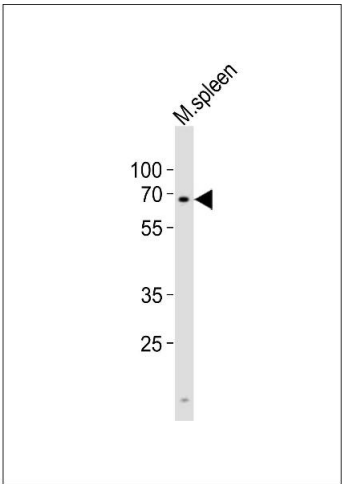
Handling

Format:	Liquid
Concentration:	0.5 mg/mL
Buffer:	Supplied in PBS with 0.09 % (W/V) sodium azide.
Preservative:	Sodium azide
Precaution of Use:	This product contains Sodium azide: a POISONOUS AND HAZARDOUS SUBSTANCE which should be handled by trained staff only.
Storage:	4 °C,-20 °C
Storage Comment:	Store at 4°C for three months and -20°C, stable for up to one year. As with all antibodies care should be taken to avoid repeated freeze thaw cycles. Antibodies should not be exposed to prolonged high temperatures.



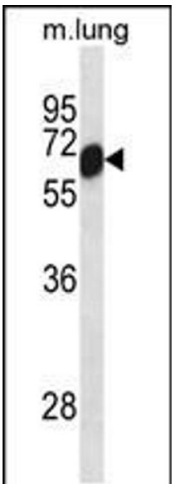
Western Blotting

Image 1. Western Blot at 1:1000 dilution + mouse cerebellum lysates Lysates/proteins at 20 ug per lane.



Western Blotting

Image 2. Western blot analysis of lysate from mouse spleen tissue lysate, using Clk2 Antibody at 1:1000.



Western Blotting

Image 3. Western blot analysis in mouse lung tissue lysates (35ug/lane).