

Datasheet for ABIN5533928  
**anti-CDK10 antibody (C-Term)**



[Go to Product page](#)

1 Image

## Overview

Quantity:	400 µL
Target:	CDK10
Binding Specificity:	AA 287-314, C-Term
Reactivity:	Human
Host:	Rabbit
Clonality:	Polyclonal
Conjugate:	This CDK10 antibody is un-conjugated
Application:	Western Blotting (WB)

## Product Details

Immunogen:	This Mouse Cdk10 antibody is generated from rabbits immunized with a KLH conjugated synthetic peptide between 287-314 amino acids from the C-terminal region of mouse Cdk10.
Isotype:	Ig Fraction
Purification:	This antibody is purified through a protein A column, followed by peptide affinity purification.

## Target Details

Target:	CDK10
Alternative Name:	Cdk10 ( <a href="#">CDK10 Products</a> )
Background:	Cdk10 belongs to the CDK (cyclin-dependent kinase) subfamily of the Ser/Thr protein kinase family. The CDK subfamily members are highly similar to the gene products of <i>S. cerevisiae</i> cdc28, and <i>S. pombe</i> cdc2, and are known to be essential for cell cycle progression. The human

## Target Details

ortholog has been shown to play a role in cellular proliferation. Multiple transcript variants encoding different isoforms have been found for this gene. A related pseudogene exists on chromosome 1. [provided by RefSeq].

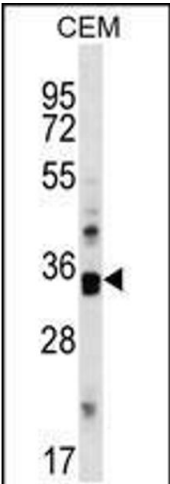
Molecular Weight:	41 kDa
Gene ID:	234854
UniProt:	<a href="#">Q3UMM4</a>

## Application Details

Application Notes:	For WB starting dilution is: 1:1000
Restrictions:	For Research Use only

## Handling

Format:	Liquid
Concentration:	0.3 mg/mL
Buffer:	Supplied in PBS with 0.09 % (W/V) sodium azide.
Preservative:	Sodium azide
Precaution of Use:	This product contains Sodium azide: a POISONOUS AND HAZARDOUS SUBSTANCE which should be handled by trained staff only.
Storage:	4 °C,-20 °C
Storage Comment:	Store at 4°C for three months and -20°C, stable for up to one year. As with all antibodies care should be taken to avoid repeated freeze thaw cycles. Antibodies should not be exposed to prolonged high temperatures.



Western Blotting

**Image 1.** Western blot analysis in CEM cell line lysates (35ug/lane).