



Datasheet for ABIN5533936  
**anti-CDR2 antibody (C-Term)**



[Go to Product page](#)

2 Images

Overview

Quantity:	400 µL
Target:	CDR2
Binding Specificity:	AA 420-448, C-Term
Reactivity:	Human
Host:	Rabbit
Clonality:	Polyclonal
Application:	Western Blotting (WB), Immunohistochemistry (Paraffin-embedded Sections) (IHC (p))

Product Details

Immunogen:	This CDR2 antibody is generated from rabbits immunized with a KLH conjugated synthetic peptide between 420-448 amino acids from the C-terminal region of human CDR2.
Isotype:	Ig Fraction
Purification:	This antibody is purified through a protein A column, followed by peptide affinity purification.

Target Details

Target:	CDR2
Alternative Name:	CDR2 ( <a href="#">CDR2 Products</a> )
Molecular Weight:	52 kDa
Gene ID:	101060399, 1039
UniProt:	<a href="#">Q01850</a>

## Application Details

Application Notes: For WB starting dilution is: 1:1000  
For IHC-P starting dilution is: 1:10~50

Restrictions: For Research Use only

## Handling

Format: Liquid

Concentration: 0.5 mg/mL

Buffer: Supplied in PBS with 0.09 % (W/V) sodium azide.

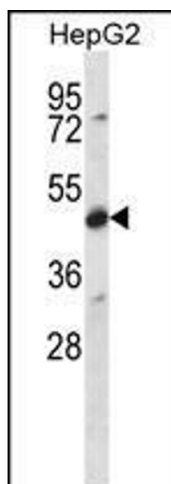
Preservative: Sodium azide

Precaution of Use: This product contains Sodium azide: a POISONOUS AND HAZARDOUS SUBSTANCE which should be handled by trained staff only.

Storage: 4 °C, -20 °C

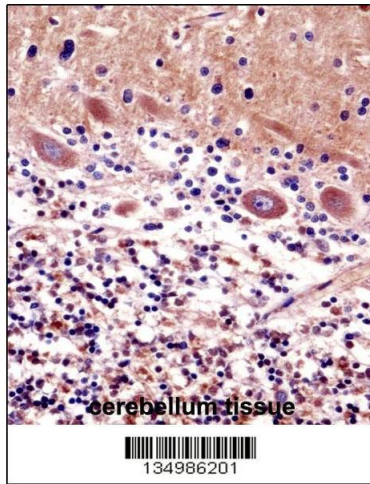
Storage Comment: Store at 4°C for three months and -20°C, stable for up to one year. As with all antibodies care should be taken to avoid repeated freeze thaw cycles. Antibodies should not be exposed to prolonged high temperatures.

## Images



### Western Blotting

**Image 1.** Western blot analysis in HepG2 cell line lysates (35ug/lane).



### Immunohistochemistry

**Image 2.** CDR2 Antibody immunohistochemistry analysis in formalin fixed and paraffin embedded human cerebellum tissue followed by peroxidase conjugation of the secondary antibody and DAB staining.