

Datasheet for ABIN5534005
anti-CUX1 antibody (C-Term)

3 Images

[Go to Product page](#)

Overview

Quantity:	400 µL
Target:	CUX1
Binding Specificity:	AA 1347-1374, C-Term
Reactivity:	Human
Host:	Rabbit
Clonality:	Polyclonal
Conjugate:	This CUX1 antibody is un-conjugated
Application:	Western Blotting (WB), Immunofluorescence (IF), Immunohistochemistry (Paraffin-embedded Sections) (IHC (p))

Product Details

Immunogen:	This CUX1 antibody is generated from rabbits immunized with a KLH conjugated synthetic peptide between 1347-1374 amino acids from the C-terminal region of human CUX1.
Isotype:	Ig Fraction
Purification:	This antibody is purified through a protein A column, followed by peptide affinity purification.

Target Details

Target:	CUX1
Alternative Name:	CUX1 (CUX1 Products)
Molecular Weight:	164 kDa

Target Details

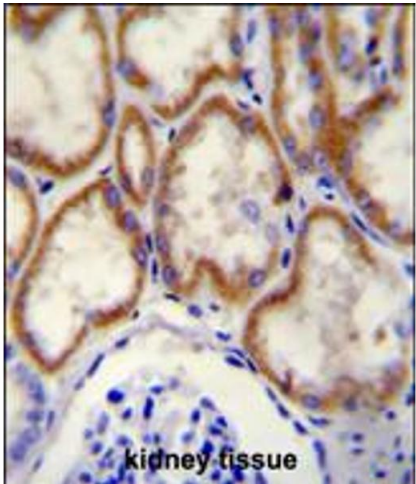
Gene ID:	1523
UniProt:	P39880
Pathways:	Cellular Glucan Metabolic Process

Application Details

Application Notes:	For WB starting dilution is: 1:2000 For IHC-P starting dilution is: 1:50~100 For IF starting dilution is: 1:10~50
Restrictions:	For Research Use only

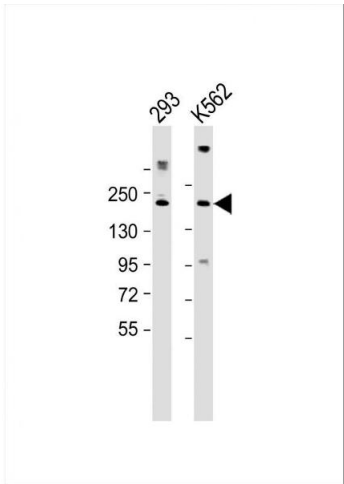
Handling

Format:	Liquid
Buffer:	Supplied in PBS with 0.09 % (W/V) sodium azide.
Preservative:	Sodium azide
Precaution of Use:	This product contains Sodium azide: a POISONOUS AND HAZARDOUS SUBSTANCE which should be handled by trained staff only.
Storage:	4 °C,-20 °C
Storage Comment:	Store at 4°C for three months and -20°C, stable for up to one year. As with all antibodies care should be taken to avoid repeated freeze thaw cycles. Antibodies should not be exposed to prolonged high temperatures.



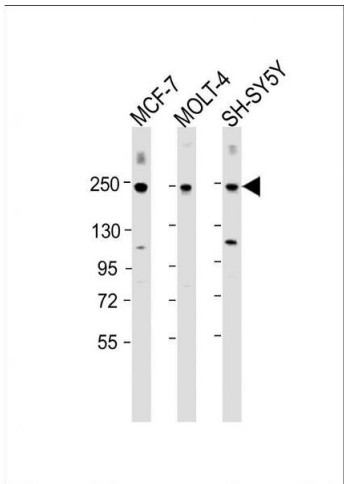
Immunohistochemistry

Image 1. CUX1 Antibody immunohistochemistry analysis in formalin fixed and paraffin embedded human kidney tissue followed by peroxidase conjugation of the secondary antibody and DAB staining.



Western Blotting

Image 2. Western Blot at 1:2000 dilution Lane 1: 293 whole cell lysate Lane 2: K562 whole cell lysate Lysates/proteins at 20 ug per lane.



Western Blotting

Image 3. Western Blot at 1:2000 dilution Lane 1: MCF-7 whole cell lysate Lane 2: MOLT-4 whole cell lysate Lane 3: SH-SY5Y whole cell lysate Lysates/proteins at 20 ug per lane.