

Datasheet for ABIN5534012  
**anti-CYP2D6 antibody (N-Term)**



[Go to Product page](#)

2 Images

## Overview

Quantity:	400 µL
Target:	CYP2D6
Binding Specificity:	AA 76-105, N-Term
Reactivity:	Human
Host:	Rabbit
Clonality:	Polyclonal
Conjugate:	This CYP2D6 antibody is un-conjugated
Application:	Western Blotting (WB), Immunohistochemistry (Paraffin-embedded Sections) (IHC (p))

## Product Details

Immunogen:	This CYP2D6 antibody is generated from rabbits immunized with a KLH conjugated synthetic peptide between 76-105 amino acids from the N-terminal region of human CYP2D6.
Isotype:	Ig Fraction
Purification:	This antibody is purified through a protein A column, followed by peptide affinity purification.

## Target Details

Target:	CYP2D6
Alternative Name:	CYP2D6 ( <a href="#">CYP2D6 Products</a> )
Background:	This gene encodes a member of the cytochrome P450 superfamily of enzymes. The cytochrome P450 proteins are monooxygenases which catalyze many reactions involved in drug metabolism and synthesis of cholesterol, steroids and other lipids. This protein localizes

## Target Details

to the endoplasmic reticulum and is known to metabolize as many as 20 % of commonly prescribed drugs. Its substrates include debrisoquine, an adrenergic-blocking drug, sparteine and propafenone, both anti-arrhythmic drugs, and amitriptyline, an anti-depressant. The gene is highly polymorphic in the population, certain alleles result in the poor metabolizer phenotype, characterized by a decreased ability to metabolize the enzyme's substrates. The gene is located near two cytochrome P450 pseudogenes on chromosome 22q13.1. Alternatively spliced transcript variants encoding different isoforms have been found for this gene.

Molecular Weight: 56 kDa

Gene ID: 1565

UniProt: [P10635](#)

## Application Details

Application Notes: For WB starting dilution is: 1:1000

For IHC-P starting dilution is: 1:10~50

Restrictions: For Research Use only

## Handling

Format: Liquid

Concentration: 0.5 mg/mL

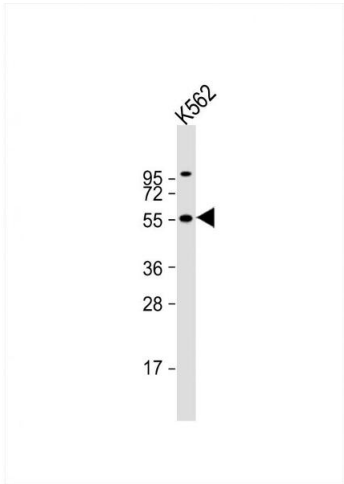
Buffer: Supplied in PBS with 0.09 % (W/V) sodium azide.

Preservative: Sodium azide

Precaution of Use: This product contains Sodium azide: a POISONOUS AND HAZARDOUS SUBSTANCE which should be handled by trained staff only.

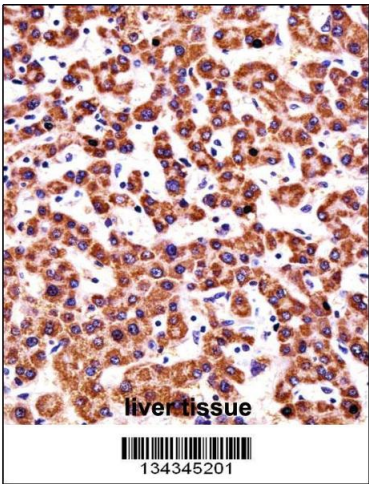
Storage: 4 °C, -20 °C

Storage Comment: Store at 4°C for three months and -20°C, stable for up to one year. As with all antibodies care should be taken to avoid repeated freeze thaw cycles. Antibodies should not be exposed to prolonged high temperatures.



### Western Blotting

**Image 1.** Western Blot at 1:1000 dilution + K562 whole cell lysate Lysates/proteins at 20 ug per lane.



### Immunohistochemistry

**Image 2.** CYP2D6 Antibody immunohistochemistry analysis in formalin fixed and paraffin embedded human liver tissue followed by peroxidase conjugation of the secondary antibody and DAB staining.