

Datasheet for ABIN5534053
anti-CDH6 antibody (N-Term)[Go to Product page](#)

2 Images

Overview

Quantity:	400 µL
Target:	CDH6
Binding Specificity:	AA 61-89, N-Term
Reactivity:	Human
Host:	Rabbit
Clonality:	Polyclonal
Conjugate:	This CDH6 antibody is un-conjugated
Application:	Western Blotting (WB)

Product Details

Immunogen:	This K Cadherin (CDH6) antibody is generated from rabbits immunized with a KLH conjugated synthetic peptide between 61-89 amino acids from the N-terminal region of human K Cadherin (CDH6).
Isotype:	Ig Fraction
Purification:	This antibody is purified through a protein A column, followed by peptide affinity purification.

Target Details

Target:	CDH6
Alternative Name:	K Cadherin (CDH6 Products)
Background:	CDH6 is a type II classical cadherin from the cadherin superfamily. It is a calcium dependent cell-cell adhesion membrane glycoprotein comprised of five extracellular cadherin repeats, a

Target Details

transmembrane region and a highly conserved cytoplasmic tail. Cadherins mediate cell-cell binding in a homophilic manner, contributing to the sorting of heterogeneous cell types and the maintenance of orderly structures such as epithelium. Strong transcriptional expression of the CDH6 gene has been observed in hepatocellular and renal carcinoma cell lines, suggesting a possible role in metastasis and invasion.

Molecular Weight: 88 kDa

Gene ID: 1004

UniProt: [P55285](#)

Pathways: [Cell-Cell Junction Organization](#)

Application Details

Application Notes: For WB starting dilution is: 1:1000

Restrictions: For Research Use only

Handling

Format: Liquid

Concentration: 0.49 mg/mL

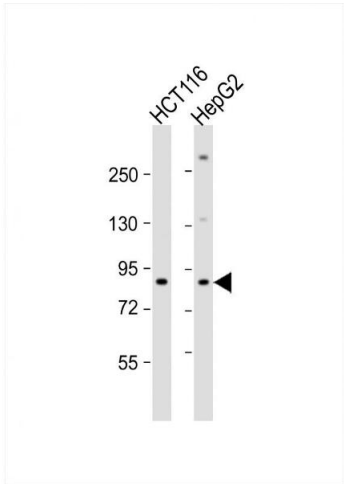
Buffer: Supplied in PBS with 0.09 % (W/V) sodium azide.

Preservative: Sodium azide

Precaution of Use: This product contains Sodium azide: a POISONOUS AND HAZARDOUS SUBSTANCE which should be handled by trained staff only.

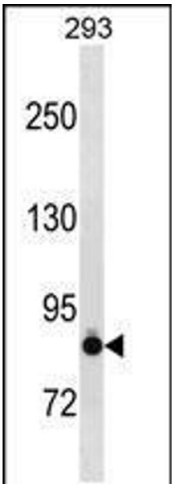
Storage: 4 °C, -20 °C

Storage Comment: Store at 4°C for three months and -20°C, stable for up to one year. As with all antibodies care should be taken to avoid repeated freeze thaw cycles. Antibodies should not be exposed to prolonged high temperatures.



Western Blotting

Image 1. Western Blot at 1:1000 dilution Lane 1: HCT116 whole cell lysate Lane 2: HepG2 whole cell lysate Lysates/proteins at 20 ug per lane.



Western Blotting

Image 2. Western blot analysis in 293 cell line lysates (35ug/lane).