

Datasheet for ABIN5534055
anti-CALCRL antibody (AA 340-367)



[Go to Product page](#)

1 Image

Overview

Quantity:	400 µL
Target:	CALCRL
Binding Specificity:	AA 340-367
Reactivity:	Human
Host:	Rabbit
Clonality:	Polyclonal
Conjugate:	This CALCRL antibody is un-conjugated
Application:	Western Blotting (WB)

Product Details

Immunogen:	This CALCRL antibody is generated from rabbits immunized with a KLH conjugated synthetic peptide between 340-367 amino acids from the Central region of human CALCRL.
Isotype:	Ig Fraction
Purification:	This antibody is purified through a protein A column, followed by peptide affinity purification.

Target Details

Target:	CALCRL
Alternative Name:	CALCRL (CALCRL Products)
Background:	Receptor for calcitonin-gene-related peptide (CGRP) together with RAMP1 and receptor for adrenomedullin together with RAMP2 or RAMP3 (By similarity). The activity of this receptor is mediated by G proteins which activate adenylyl cyclase.

Target Details

Molecular Weight: 53 kDa

Gene ID: 10203

UniProt: [Q16602](#)

Pathways: [cAMP Metabolic Process](#)

Application Details

Application Notes: For WB starting dilution is: 1:1000

Restrictions: For Research Use only

Handling

Format: Liquid

Concentration: 0.47 mg/mL

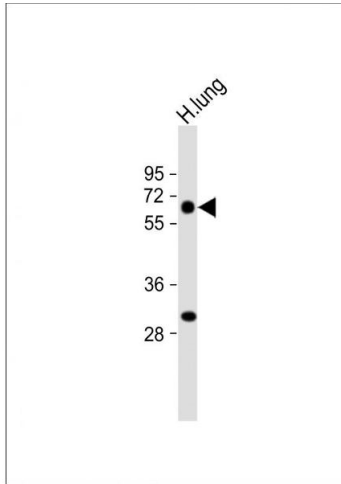
Buffer: Supplied in PBS with 0.09 % (W/V) sodium azide.

Preservative: Sodium azide

Precaution of Use: This product contains Sodium azide: a POISONOUS AND HAZARDOUS SUBSTANCE which should be handled by trained staff only.

Storage: 4 °C, -20 °C

Storage Comment: Store at 4°C for three months and -20°C, stable for up to one year. As with all antibodies care should be taken to avoid repeated freeze thaw cycles. Antibodies should not be exposed to prolonged high temperatures.



Western Blotting

Image 1. Western Blot at 1:1000 dilution + human lung lysate Lysates/proteins at 20 ug per lane.