

Datasheet for ABIN5534058
anti-CROT antibody (C-Term)



[Go to Product page](#)

2 Images

Overview

Quantity:	400 µL
Target:	CROT
Binding Specificity:	AA 414-445, C-Term
Reactivity:	Human
Host:	Rabbit
Clonality:	Polyclonal
Conjugate:	This CROT antibody is un-conjugated
Application:	Western Blotting (WB), Immunohistochemistry (Paraffin-embedded Sections) (IHC (p))

Product Details

Immunogen:	This COT (MAP3K8/MEKK8) antibody is generated from rabbits immunized with a KLH conjugated synthetic peptide between 414-445 amino acids from the C-terminal region of human COT (MAP3K8/MEKK8).
Isotype:	Ig Fraction
Purification:	This antibody is prepared by Saturated Ammonium Sulfate (SAS) precipitation followed by dialysis

Target Details

Target:	CROT
Alternative Name:	COT (CROT Products)
Background:	Mitogen-activated protein kinase (MAPK) signaling cascades include MAPK or extracellular

Target Details

signal-regulated kinase (ERK), MAPK kinase (MKK or MEK), and MAPK kinase kinase (MAPKKK or MEKK). MAPKK kinase/MEKK phosphorylates and activates its downstream protein kinase, MAPK kinase/MEK, which in turn activates MAPK. The kinases of these signaling cascades are highly conserved, and homologs exist in yeast, Drosophila, and mammalian cells. MEKK8 is able to activate NF-kappa-B 1 by stimulating proteasome-mediated proteolysis of NF-kappa-B 1/p105. The protein appears to play an important role in the cell cycle. This cytoplasmic protein is expressed in several normal tissues and human tumor-derived cell lines. The 58 kDa form is activated specifically during the S and G2/M phases of the cell cycle. The longer form undergoes phosphorylation on Ser residues mainly, and the shorter form on both Ser and Thr residues.

Molecular Weight:	53 kDa
Gene ID:	1326
UniProt:	P41279
Pathways:	Monocarboxylic Acid Catabolic Process

Application Details

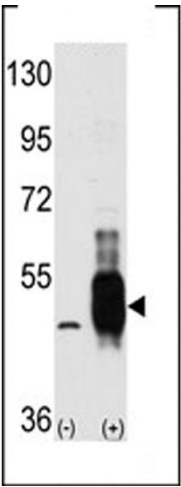
Application Notes:	For WB starting dilution is: 1:1000 For IHC-P starting dilution is: 1:50~100
Restrictions:	For Research Use only

Handling

Format:	Liquid
Concentration:	1.4 mg/mL
Buffer:	Supplied in PBS with 0.09 % (W/V) sodium azide.
Preservative:	Sodium azide
Precaution of Use:	This product contains Sodium azide: a POISONOUS AND HAZARDOUS SUBSTANCE which should be handled by trained staff only.
Storage:	4 °C,-20 °C
Storage Comment:	Store at 4°C for three months and -20°C, stable for up to one year. As with all antibodies care should be taken to avoid repeated freeze thaw cycles. Antibodies should not be exposed to

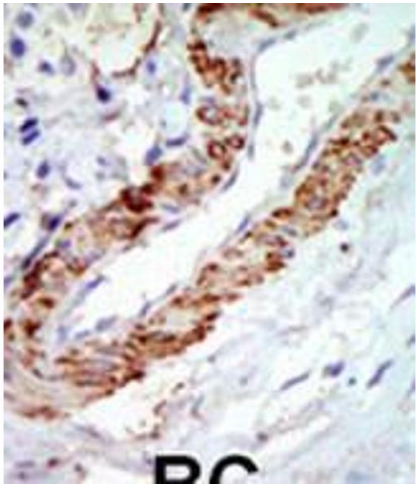
prolonged high temperatures.

Images



Western Blotting

Image 1. Western blot analysis of MEKK8 using MEKK8 Antibody using 293 cell lysates (2 ug/lane) either nontransfected (Lane 1) or transiently transfected with the MAP3K8 gene (Lane 2).



Immunohistochemistry

Image 2. Formalin-fixed and paraffin-embedded human cancer tissue reacted with the primary antibody, which was peroxidase-conjugated to the secondary antibody, followed by DAB staining. BC = breast carcinoma; HC = hepatocarcinoma.