

Datasheet for ABIN5534073  
**anti-GJB4 antibody (N-Term)**



[Go to Product page](#)

1 Image

## Overview

Quantity:	400 µL
Target:	GJB4
Binding Specificity:	AA 90-120, N-Term
Reactivity:	Human
Host:	Rabbit
Clonality:	Polyclonal
Conjugate:	This GJB4 antibody is un-conjugated
Application:	Western Blotting (WB)

## Product Details

Immunogen:	This Connexin 30.3 antibody is generated from rabbits immunized with a KLH conjugated synthetic peptide between 90-120 amino acids from the N-terminal region of human Connexin 30.3.
Isotype:	Ig Fraction
Purification:	This antibody is prepared by Saturated Ammonium Sulfate (SAS) precipitation followed by dialysis

## Target Details

Target:	GJB4
Alternative Name:	Connexin 30.3 ( <a href="#">GJB4 Products</a> )
Background:	Gap junctions permit direct cell-to-cell passage of small cytoplasmic molecules, including ions,

## Target Details

metabolic intermediates, and second messengers, and thereby mediate intercellular communication. Gap junction channels consist of connexin protein subunits encoded by a multigene family. Erythrokeratoderma variabilis (EKV) is an autosomal dominant disorder of keratinization characterized by migratory erythematous lesions and fixed keratotic plaques. Mutations in the GJB3 gene have been reported in some but not all families, although it has been postulated that the absence of connexin 30.3 can be compensated by other connexins.

Molecular Weight: 30 kDa

Gene ID: 127534

UniProt: [Q9NTQ9](#)

## Application Details

Application Notes: For WB starting dilution is: 1:1000

Restrictions: For Research Use only

## Handling

Format: Liquid

Concentration: 1.1 mg/mL

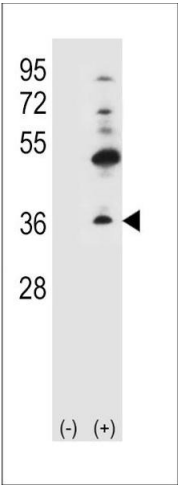
Buffer: Supplied in PBS with 0.09 % (W/V) sodium azide.

Preservative: Sodium azide

Precaution of Use: This product contains Sodium azide: a POISONOUS AND HAZARDOUS SUBSTANCE which should be handled by trained staff only.

Storage: 4 °C, -20 °C

Storage Comment: Store at 4°C for three months and -20°C, stable for up to one year. As with all antibodies care should be taken to avoid repeated freeze thaw cycles. Antibodies should not be exposed to prolonged high temperatures.



Western Blotting

**Image 1.** Western blot analysis of GJB4 using rabbit polyclonal GJB4 Antibody (H105.Connexin) using 293 cell lysates (2 ug/lane) either nontransfected (Lane 1) or transiently transfected (Lane 2) with the GJB4 gene.