

Datasheet for ABIN5534074  
**anti-GJB5 antibody (AA 89-119)**[Go to Product page](#)

## 2 Images

## Overview

Quantity:	400 µL
Target:	GJB5
Binding Specificity:	AA 89-119
Reactivity:	Human
Host:	Rabbit
Clonality:	Polyclonal
Conjugate:	This GJB5 antibody is un-conjugated
Application:	Western Blotting (WB), Immunohistochemistry (Paraffin-embedded Sections) (IHC (p))

## Product Details

Immunogen:	This GJB5 antibody is generated from rabbits immunized with a KLH conjugated synthetic peptide between 89-119 amino acids from the Central region of human GJB5.
Isotype:	Ig Fraction
Purification:	This antibody is prepared by Saturated Ammonium Sulfate (SAS) precipitation followed by dialysis

## Target Details

Target:	GJB5
Alternative Name:	GJB5 ( <a href="#">GJB5 Products</a> )
Background:	Gap junctions are conduits that allow the direct cell-to-cell passage of small cytoplasmic molecules, including ions, metabolic intermediates, and second messengers, and thereby

## Target Details

mediate intercellular metabolic and electrical communication. Gap junction channels consist of connexin protein subunits, which are encoded by a multigene family. GJBs (gap-junction proteins or connexins) such as GJB5 are thought to play crucial functional roles associated with these channels.

Molecular Weight: 31 kDa

Gene ID: 2709

UniProt: [095377](#)

## Application Details

Application Notes: For IHC-P starting dilution is: 1:50~100

For WB starting dilution is: 1:1000

Restrictions: For Research Use only

## Handling

Format: Liquid

Concentration: 2 mg/mL

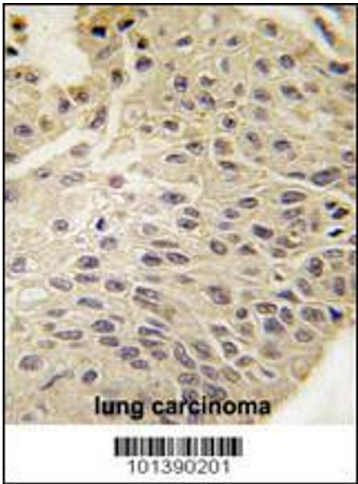
Buffer: Supplied in PBS with 0.09 % (W/V) sodium azide.

Preservative: Sodium azide

Precaution of Use: This product contains Sodium azide: a POISONOUS AND HAZARDOUS SUBSTANCE which should be handled by trained staff only.

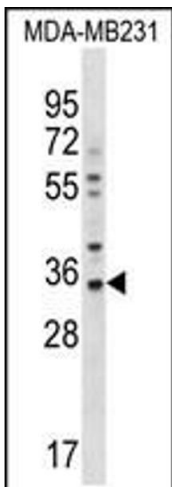
Storage: 4 °C, -20 °C

Storage Comment: Store at 4°C for three months and -20°C, stable for up to one year. As with all antibodies care should be taken to avoid repeated freeze thaw cycles. Antibodies should not be exposed to prolonged high temperatures.



#### Immunohistochemistry

**Image 1.** Formalin-fixed and paraffin-embedded human lung carcinoma tissue reacted with GJB5 Antibody , which was peroxidase-conjugated to the secondary antibody, followed by DAB staining.



#### Western Blotting

**Image 2.** Western blot analysis in MDA-MB231 cell line lysates (35ug/lane).This demonstrates the GJB5 antibody detected the GJB5 protein (arrow).