

Datasheet for ABIN5534075
anti-GJD2 antibody (C-Term)

2 Images

[Go to Product page](#)

Overview

Quantity:	400 µL
Target:	GJD2
Binding Specificity:	AA 291-321, C-Term
Reactivity:	Human, Mouse, Rat
Host:	Rabbit
Clonality:	Polyclonal
Conjugate:	This GJD2 antibody is un-conjugated
Application:	Western Blotting (WB), Immunohistochemistry (Paraffin-embedded Sections) (IHC (p))

Product Details

Immunogen:	This Connexin 36 antibody is generated from rabbits immunized with a KLH conjugated synthetic peptide between 291-321 amino acids from the C-terminal region of human Connexin 36.
Isotype:	Ig Fraction
Purification:	This antibody is prepared by Saturated Ammonium Sulfate (SAS) precipitation followed by dialysis

Target Details

Target:	GJD2
Alternative Name:	Connexin 36 (GJD2 Products)
Background:	GJA9, also called connexin-36 (CX36), is a member of the connexin gene family that is

Target Details

expressed predominantly in mammalian neurons. Connexins associate in groups of 6 and are organized radially around a central pore to form connexons. Each gap junction intercellular channel is formed by the conjunction of 2 connexons.

Molecular Weight: 36 kDa

Gene ID: 57369

UniProt: [Q9UKL4](#)

Application Details

Application Notes: For WB starting dilution is: 1:2000

For IHC-P starting dilution is: 1:50~100

Restrictions: For Research Use only

Handling

Format: Liquid

Concentration: 1.45 mg/mL

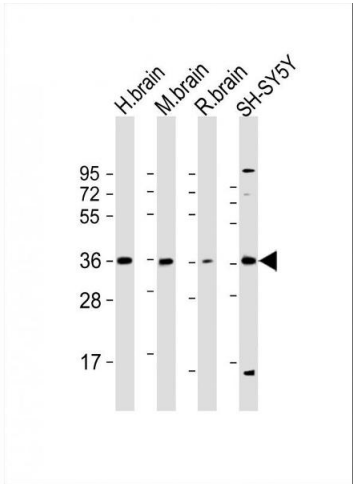
Buffer: Supplied in PBS with 0.09 % (W/V) sodium azide.

Preservative: Sodium azide

Precaution of Use: This product contains Sodium azide: a POISONOUS AND HAZARDOUS SUBSTANCE which should be handled by trained staff only.

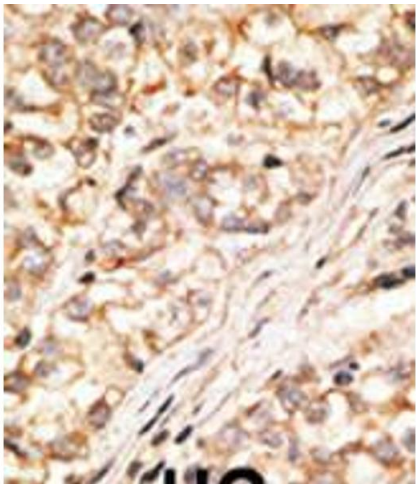
Storage: 4 °C,-20 °C

Storage Comment: Store at 4°C for three months and -20°C, stable for up to one year. As with all antibodies care should be taken to avoid repeated freeze thaw cycles. Antibodies should not be exposed to prolonged high temperatures.



Western Blotting

Image 1. Western Blot at 1:2000 dilution Lane 1: human brain lysate Lane 2: mouse brain lysate Lane 3: rat brain lysate Lane 4: SH-SY5Y whole cell lysate Lysates/proteins at 20 ug per lane.



Immunohistochemistry

Image 2. Formalin-fixed and paraffin-embedded human cancer tissue reacted with the primary antibody, which was peroxidase-conjugated to the secondary antibody, followed by DAB staining. BC = breast carcinoma; HC = hepatocarcinoma.