

Datasheet for ABIN5534097  
**anti-CYP2B6 antibody (AA 462-488)**[Go to Product page](#)

## 2 Images

## Overview

Quantity:	400 µL
Target:	CYP2B6
Binding Specificity:	AA 462-488
Reactivity:	Human
Host:	Rabbit
Clonality:	Polyclonal
Conjugate:	This CYP2B6 antibody is un-conjugated
Application:	Western Blotting (WB), Immunohistochemistry (Paraffin-embedded Sections) (IHC (p))

## Product Details

Immunogen:	This P450R antibody is generated from rabbits immunized with a KLH conjugated synthetic peptide between 462-488 amino acids from the Central region of human P450R.
Isotype:	Ig Fraction
Purification:	This antibody is prepared by Saturated Ammonium Sulfate (SAS) precipitation followed by dialysis

## Target Details

Target:	CYP2B6
Alternative Name:	P450 ( <a href="#">CYP2B6 Products</a> )
Background:	P450R is an endoplasmic reticulum membrane oxidoreductase with an FAD-binding domain and a flavodoxin-like domain. The protein binds two cofactors, FAD and FMN, which allow it to

## Target Details

donate electrons directly from NADPH to all microsomal P450 enzymes. Mutations in its gene have been associated with various diseases, including apparent combined P450C17 and P450C21 deficiency, amenorrhea and disordered steroidogenesis, congenital adrenal hyperplasia and Antley-Bixler syndrome.

Molecular Weight: 77 kDa

Gene ID: 5447

UniProt: [P16435](#)

## Application Details

Application Notes: For WB starting dilution is: 1:1000

For IHC-P starting dilution is: 1:50~100

Restrictions: For Research Use only

## Handling

Format: Liquid

Concentration: 2 mg/mL

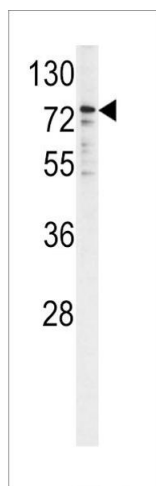
Buffer: Supplied in PBS with 0.09 % (W/V) sodium azide.

Preservative: Sodium azide

Precaution of Use: This product contains Sodium azide: a POISONOUS AND HAZARDOUS SUBSTANCE which should be handled by trained staff only.

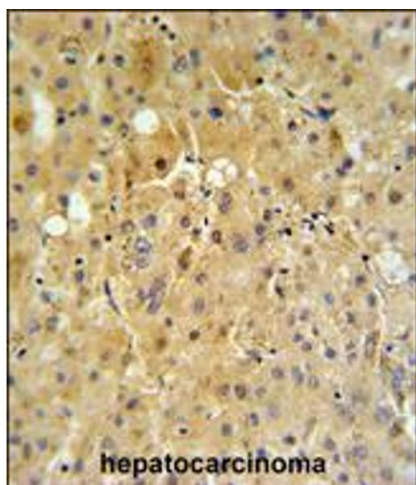
Storage: 4 °C, -20 °C

Storage Comment: Store at 4°C for three months and -20°C, stable for up to one year. As with all antibodies care should be taken to avoid repeated freeze thaw cycles. Antibodies should not be exposed to prolonged high temperatures.



#### Western Blotting

**Image 1.** Western blot analysis of P450R antibody in K562 cell line lysates (35ug/lane)



#### Immunohistochemistry

**Image 2.** P450R Antibody IHC analysis in formalin fixed and paraffin embedded human hepatocarcinoma tissue followed by peroxidase conjugation of the secondary antibody and DAB staining.