

Datasheet for ABIN5534149  
**anti-DLX5 antibody (AA 100-128)**



[Go to Product page](#)

3 Images

## Overview

Quantity:	400 µL
Target:	DLX5
Binding Specificity:	AA 100-128
Reactivity:	Human
Host:	Rabbit
Clonality:	Polyclonal
Conjugate:	This DLX5 antibody is un-conjugated
Application:	Western Blotting (WB), Immunohistochemistry (Paraffin-embedded Sections) (IHC (p))

## Product Details

Immunogen:	This DLX5 antibody is generated from rabbits immunized with a KLH conjugated synthetic peptide between 100-128 amino acids from the Central region of human DLX5.
Isotype:	Ig Fraction
Purification:	This antibody is purified through a protein A column, followed by peptide affinity purification.

## Target Details

Target:	DLX5
Alternative Name:	DLX5 ( <a href="#">DLX5 Products</a> )
Background:	This gene encodes a member of a homeobox transcription factor gene family similar to the Drosophila distal-less gene. The encoded protein may play a role in bone development and fracture healing. Mutation in this gene, which is located in a tail-to-tail configuration with

## Target Details

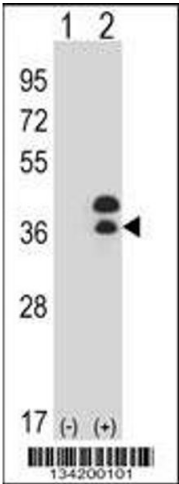
	another member of the family on the long arm of chromosome 7, may be associated with split-hand/split-foot malformation.
Molecular Weight:	32 kDa
Gene ID:	1749
UniProt:	<a href="#">P56178</a>

## Application Details

Application Notes:	For WB starting dilution is: 1:1000
	For IHC-P starting dilution is: 1:10~50
Restrictions:	For Research Use only

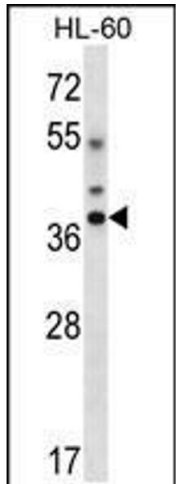
## Handling

Format:	Liquid
Concentration:	0.5 mg/mL
Buffer:	Supplied in PBS with 0.09 % (W/V) sodium azide.
Preservative:	Sodium azide
Precaution of Use:	This product contains Sodium azide: a POISONOUS AND HAZARDOUS SUBSTANCE which should be handled by trained staff only.
Storage:	4 °C,-20 °C
Storage Comment:	Store at 4°C for three months and -20°C, stable for up to one year. As with all antibodies care should be taken to avoid repeated freeze thaw cycles. Antibodies should not be exposed to prolonged high temperatures.



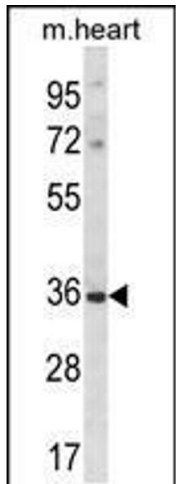
Western Blotting

**Image 1.** Western blot analysis of DLX5 using rabbit polyclonal DLX5 Antibody using 293 cell lysates (2 ug/lane) either nontransfected (Lane 1) or transiently transfected (Lane 2) with the DLX5 gene.



Western Blotting

**Image 2.** Western blot analysis in HL-60 cell line lysates (35ug/lane).



Western Blotting

**Image 3.** Western blot analysis in mouse heart tissue lysates (35ug/lane).