

Datasheet for ABIN5534171  
**anti-POLD3 antibody (C-Term)**

## 2 Images

[Go to Product page](#)

## Overview

Quantity:	400 µL
Target:	POLD3
Binding Specificity:	AA 416-443, C-Term
Reactivity:	Human, Mouse
Host:	Rabbit
Clonality:	Polyclonal
Conjugate:	This POLD3 antibody is un-conjugated
Application:	Western Blotting (WB)

## Product Details

Immunogen:	This POLD3 antibody is generated from rabbits immunized with a KLH conjugated synthetic peptide between 416-443 amino acids from the C-terminal region of human POLD3.
Isotype:	Ig Fraction
Purification:	This antibody is purified through a protein A column, followed by peptide affinity purification.

## Target Details

Target:	POLD3
Alternative Name:	POLD3 ( <a href="#">POLD3 Products</a> )
Background:	The DNA polymerase delta complex is involved in DNA replication and repair, and it consists of the proliferating cell nuclear antigen (PCNA, MIM 176740), the multisubunit replication factor C (see MIM 102579), and the 4 subunit polymerase complex: POLD1 (MIM 174761), POLD2 (MIM

## Target Details

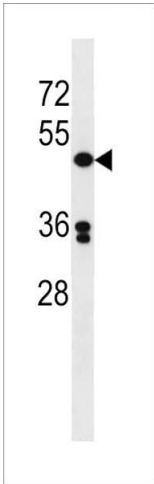
	600815), POLD3, and POLD4 (MIM 611525) (Liu and Warbrick, 2006 [PubMed 16934752]).[supplied by OMIM].
Molecular Weight:	51 kDa
Gene ID:	10714
UniProt:	<a href="#">Q15054</a>
Pathways:	<a href="#">Telomere Maintenance</a> , <a href="#">DNA Damage Repair</a> , <a href="#">DNA Replication</a> , <a href="#">Synthesis of DNA</a>

## Application Details

Application Notes:	For WB starting dilution is: 1:1000
Restrictions:	For Research Use only

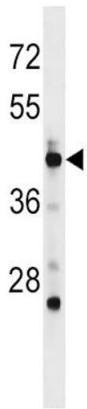
## Handling

Format:	Liquid
Concentration:	0.45 mg/mL
Buffer:	Supplied in PBS with 0.09 % (W/V) sodium azide.
Preservative:	Sodium azide
Precaution of Use:	This product contains Sodium azide: a POISONOUS AND HAZARDOUS SUBSTANCE which should be handled by trained staff only.
Storage:	4 °C, -20 °C
Storage Comment:	Store at 4°C for three months and -20°C, stable for up to one year. As with all antibodies care should be taken to avoid repeated freeze thaw cycles. Antibodies should not be exposed to prolonged high temperatures.



Western Blotting

**Image 1.** Western blot analysis in Jurkat cell line lysates (35ug/lane).



Western Blotting

**Image 2.** Western blot analysis in mouse spleen tissue lysates (35ug/lane).