

Datasheet for ABIN5534203  
**anti-NUDT2 antibody (AA 62-90)**



[Go to Product page](#)

1 Image

## Overview

Quantity:	400 µL
Target:	NUDT2
Binding Specificity:	AA 62-90
Reactivity:	Human
Host:	Rabbit
Clonality:	Polyclonal
Conjugate:	This NUDT2 antibody is un-conjugated
Application:	Western Blotting (WB)

## Product Details

Immunogen:	This NUDT2 antibody is generated from rabbits immunized with a KLH conjugated synthetic peptide between 62-90 amino acids from the Central region of human NUDT2.
Isotype:	Ig Fraction
Purification:	This antibody is purified through a protein A column, followed by peptide affinity purification.

## Target Details

Target:	NUDT2
Alternative Name:	NUDT2 ( <a href="#">NUDT2 Products</a> )
Background:	This gene encodes a member of the MutT family of nucleotide pyrophosphatases, a subset of the larger NUDIX hydrolase family. The gene product possesses a modification of the MutT sequence motif found in certain nucleotide pyrophosphatases. The enzyme asymmetrically

## Target Details

hydrolyzes Ap4A to yield AMP and ATP and is responsible for maintaining the intracellular level of the dinucleotide Ap4A, the function of which has yet to be established. This gene may be a candidate tumor suppressor gene. Alternative splicing has been observed at this locus and three transcript variants, all encoding the same protein, have been identified.

Molecular Weight: 17 kDa

Gene ID: 318

UniProt: [P50583](#)

## Application Details

Application Notes: For WB starting dilution is: 1:1000

Restrictions: For Research Use only

## Handling

Format: Liquid

Concentration: 0.5 mg/mL

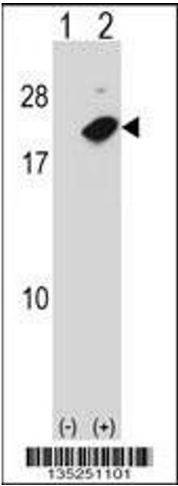
Buffer: Supplied in PBS with 0.09 % (W/V) sodium azide.

Preservative: Sodium azide

Precaution of Use: This product contains Sodium azide: a POISONOUS AND HAZARDOUS SUBSTANCE which should be handled by trained staff only.

Storage: 4 °C,-20 °C

Storage Comment: Store at 4°C for three months and -20°C, stable for up to one year. As with all antibodies care should be taken to avoid repeated freeze thaw cycles. Antibodies should not be exposed to prolonged high temperatures.



Western Blotting

**Image 1.** Western blot analysis of NUDT2 using rabbit polyclonal NUDT2 Antibody using 293 cell lysates (2 ug/lane) either nontransfected (Lane 1) or transiently transfected (Lane 2) with the NUDT2 gene.