

Datasheet for ABIN5534285
anti-FRAT1 antibody (AA 99-128)

2 Images

[Go to Product page](#)

Overview

Quantity:	400 µL
Target:	FRAT1
Binding Specificity:	AA 99-128
Reactivity:	Human
Host:	Rabbit
Clonality:	Polyclonal
Conjugate:	This FRAT1 antibody is un-conjugated
Application:	Western Blotting (WB), Immunohistochemistry (Paraffin-embedded Sections) (IHC (p))

Product Details

Immunogen:	This FRAT1 antibody is generated from rabbits immunized with a KLH conjugated synthetic peptide between 99-128 amino acids from the Central region of human FRAT1.
Isotype:	Ig Fraction
Purification:	This antibody is prepared by Saturated Ammonium Sulfate (SAS) precipitation followed by dialysis

Target Details

Target:	FRAT1
Alternative Name:	FRAT1 (FRAT1 Products)
Background:	FRAT1 belongs to the GSK-3-binding protein family. It may function in tumor progression and in lymphomagenesis. It positively regulates the Wnt signaling pathway by stabilizing beta-catenin

Target Details

through the association with GSK-3. It may play a role in tumor progression and collaborate with PIM1 and MYC in lymphomagenesis.

Molecular Weight: 29 kDa

Gene ID: 10023

UniProt: [Q92837](#)

Application Details

Application Notes: For WB starting dilution is: 1:1000

For IHC-P starting dilution is: 1:10~50

Restrictions: For Research Use only

Handling

Format: Liquid

Concentration: 2 mg/mL

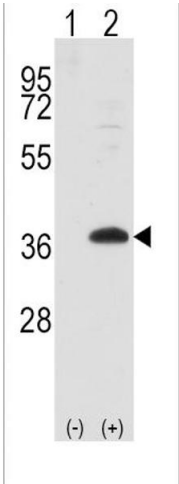
Buffer: Supplied in PBS with 0.09 % (W/V) sodium azide.

Preservative: Sodium azide

Precaution of Use: This product contains Sodium azide: a POISONOUS AND HAZARDOUS SUBSTANCE which should be handled by trained staff only.

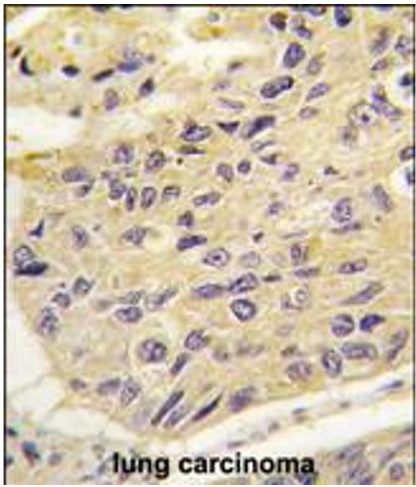
Storage: 4 °C, -20 °C

Storage Comment: Store at 4°C for three months and -20°C, stable for up to one year. As with all antibodies care should be taken to avoid repeated freeze thaw cycles. Antibodies should not be exposed to prolonged high temperatures.



Western Blotting

Image 1. Western blot analysis of FRAT1 using rabbit polyclonal FRAT1 Antibody.293 cell lysates (2 ug/lane) either nontransfected (Lane 1) or transiently transfected with the FRAT1 gene (Lane 2).



Immunohistochemistry

Image 2. Formalin-fixed and paraffin-embedded human lung carcinoma tissue reacted with FRAT1 antibody , which was peroxidase-conjugated to the secondary antibody, followed by DAB staining.