

Datasheet for ABIN5534289
anti-FUBP1 antibody (AA 240-268)



[Go to Product page](#)

2 Images

Overview

Quantity:	400 µL
Target:	FUBP1
Binding Specificity:	AA 240-268
Reactivity:	Human, Mouse, Rat
Host:	Rabbit
Clonality:	Polyclonal
Conjugate:	This FUBP1 antibody is un-conjugated
Application:	Western Blotting (WB)

Product Details

Immunogen:	This FUBP1 antibody is generated from rabbits immunized with a KLH conjugated synthetic peptide between 240-268 amino acids from the Central region of human FUBP1.
Isotype:	Ig Fraction
Purification:	This antibody is purified through a protein A column, followed by peptide affinity purification.

Target Details

Target:	FUBP1
Alternative Name:	FUBP1 (FUBP1 Products)
Background:	This gene encodes a ssDNA binding protein that activates the far upstream element (FUSE) of c-myc and stimulates expression of c-myc in undifferentiated cells. Regulation of FUSE by FUBP occurs through single-strand binding of FUBP to the non-coding strand. This protein has

Target Details

been shown to function as an ATP-dependent DNA helicase.

Molecular Weight: 68 kDa

Gene ID: 8880

UniProt: [Q96AE4](#)

Application Details

Application Notes: For WB starting dilution is: 1:1000-1:2000

Restrictions: For Research Use only

Handling

Format: Liquid

Concentration: 0.45 mg/mL

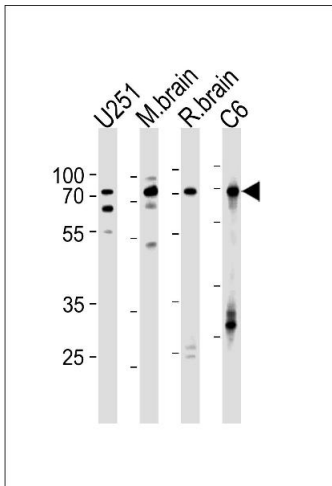
Buffer: Supplied in PBS with 0.09 % (W/V) sodium azide.

Preservative: Sodium azide

Precaution of Use: This product contains Sodium azide: a POISONOUS AND HAZARDOUS SUBSTANCE which should be handled by trained staff only.

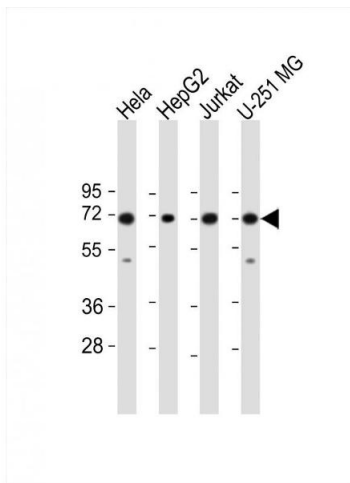
Storage: 4 °C, -20 °C

Storage Comment: Store at 4°C for three months and -20°C, stable for up to one year. As with all antibodies care should be taken to avoid repeated freeze thaw cycles. Antibodies should not be exposed to prolonged high temperatures.



Western Blotting

Image 1. Western blot analysis in U251, rat C6 cell line, mouse brain, rat brain tissue lysates (35ug/lane).



Western Blotting

Image 2. Western Blot at 1:1000 dilution Lane 1: HeLa whole cell lysate Lane 2: HepG2 whole cell lysate Lane 3: Jurkat whole cell lysate Lane 4: U-251 MG whole cell lysate Lysates/proteins at 20 ug per lane.