

Datasheet for ABIN5534356  
**anti-GPI antibody (AA 571-601)**[Go to Product page](#)

## 3 Images

## Overview

Quantity:	400 µL
Target:	GPI
Binding Specificity:	AA 571-601
Reactivity:	Human
Host:	Rabbit
Clonality:	Polyclonal
Conjugate:	This GPI antibody is un-conjugated
Application:	Western Blotting (WB), Flow Cytometry (FACS), Immunohistochemistry (Paraffin-embedded Sections) (IHC (p))

## Product Details

Immunogen:	This AMFR antibody is generated from rabbits immunized with a KLH conjugated synthetic peptide between 571-601 amino acids of human AMFR.
Isotype:	Ig Fraction
Purification:	This antibody is prepared by Saturated Ammonium Sulfate (SAS) precipitation followed by dialysis

## Target Details

Target:	GPI
Alternative Name:	AMF ( <a href="#">GPI Products</a> )
Target Type:	Viral Protein

## Target Details

**Background:** Autocrine motility factor (AMF) is a protein secreted by tumor cells that stimulates tumor motility. The gene for AMFR encodes a 323-amino acid polypeptide that has a single transmembrane domain and several putative glycosylation sites. The protein sequence has some homology to human tumor protein p53.

**Molecular Weight:** 73 kDa

**Gene ID:** 267

**UniProt:** [Q9UKV5](#)

## Application Details

**Application Notes:** For WB starting dilution is: 1:1000

For IHC-P starting dilution is: 1:50~100

For FACS starting dilution is: 1:10~50

**Restrictions:** For Research Use only

## Handling

**Format:** Liquid

**Concentration:** 2 mg/mL

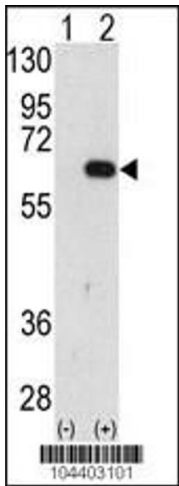
**Buffer:** Supplied in PBS with 0.09 % (W/V) sodium azide.

**Preservative:** Sodium azide

**Precaution of Use:** This product contains Sodium azide: a POISONOUS AND HAZARDOUS SUBSTANCE which should be handled by trained staff only.

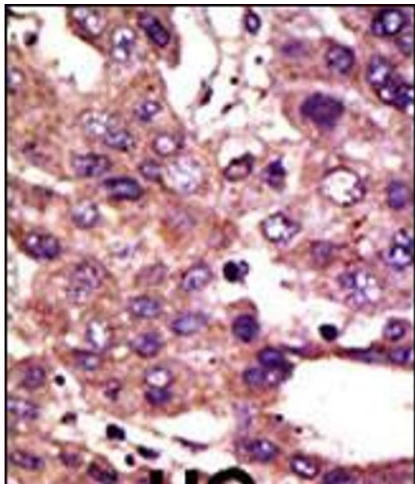
**Storage:** 4 °C, -20 °C

**Storage Comment:** Store at 4°C for three months and -20°C, stable for up to one year. As with all antibodies care should be taken to avoid repeated freeze thaw cycles. Antibodies should not be exposed to prolonged high temperatures.



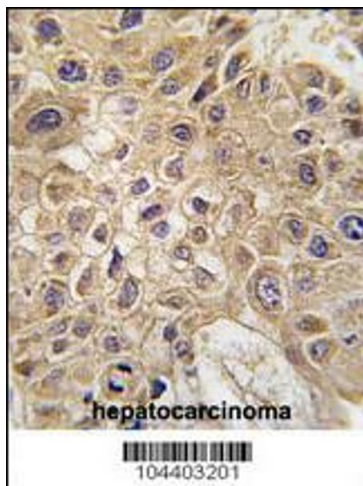
#### Western Blotting

**Image 1.** Western blot analysis of AMFR using AMFR Antibody using 293 cell lysates (2 ug/lane) either nontransfected (Lane 1) or transiently transfected with the AMFR gene (Lane 2).



#### Immunohistochemistry

**Image 2.** Formalin-fixed and paraffin-embedded human cancer tissue reacted with the primary antibody, which was peroxidase-conjugated to the secondary antibody, followed by DAB staining. BC = breast carcinoma; HC = hepatocarcinoma.



#### Immunohistochemistry

**Image 3.** Formalin-fixed and paraffin-embedded human hepatocarcinoma tissue reacted with AMFR Antibody, which was peroxidase-conjugated to the secondary antibody, followed by DAB staining.