

Datasheet for ABIN5534368
anti-NEDD9 antibody (AA 335-363)[Go to Product page](#)

2 Images

Overview

Quantity:	400 µL
Target:	NEDD9
Binding Specificity:	AA 335-363
Reactivity:	Human
Host:	Rabbit
Clonality:	Polyclonal
Conjugate:	This NEDD9 antibody is un-conjugated
Application:	Western Blotting (WB), Immunohistochemistry (Paraffin-embedded Sections) (IHC (p))

Product Details

Immunogen:	This NEDD9 antibody is generated from rabbits immunized with a KLH conjugated synthetic peptide between 335-363 amino acids from the Central region of human NEDD9.
Isotype:	Ig Fraction
Purification:	This antibody is purified through a protein A column, followed by peptide affinity purification.

Target Details

Target:	NEDD9
Alternative Name:	NEDD9 (NEDD9 Products)
Background:	Docking protein which plays a central coordinating role for tyrosine-kinase-based signaling related to cell adhesion. May function in transmitting growth control signals between focal adhesions at the cell periphery and the mitotic spindle in response to adhesion or growth factor

Target Details

signals initiating cell proliferation. May play an important role in integrin beta-1 or B cell antigen receptor (BCR) mediated signaling in B-and T-cells. Integrin beta-1 stimulation leads to recruitment of various proteins including CRK, NCK and SHPTP2 to the tyrosine phosphorylated form.

Molecular Weight: 93 kDa

Gene ID: 4739

UniProt: [Q14511](#)

Application Details

Application Notes: For WB starting dilution is: 1:1000

For IHC-P starting dilution is: 1:10~50

Restrictions: For Research Use only

Handling

Format: Liquid

Concentration: 0.5 mg/mL

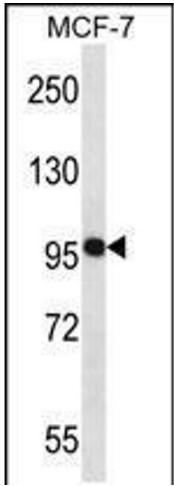
Buffer: Supplied in PBS with 0.09 % (W/V) sodium azide.

Preservative: Sodium azide

Precaution of Use: This product contains Sodium azide: a POISONOUS AND HAZARDOUS SUBSTANCE which should be handled by trained staff only.

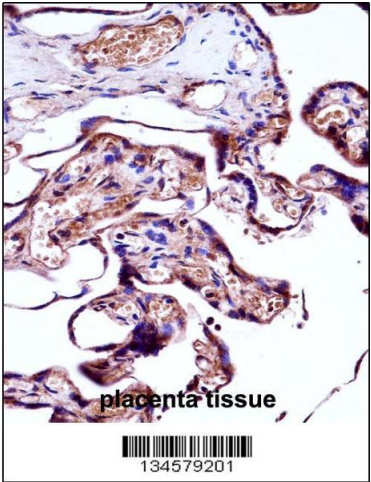
Storage: 4 °C, -20 °C

Storage Comment: Store at 4°C for three months and -20°C, stable for up to one year. As with all antibodies care should be taken to avoid repeated freeze thaw cycles. Antibodies should not be exposed to prolonged high temperatures.



Western Blotting

Image 1. Western blot analysis in MCF-7 cell line lysates (35ug/lane).



Immunohistochemistry

Image 2. NEDD9 Antibody immunohistochemistry analysis in formalin fixed and paraffin embedded human placenta tissue followed by peroxidase conjugation of the secondary antibody and DAB staining.