

Datasheet for ABIN5534370  
**anti-ZDHHC13 antibody (N-Term)**[Go to Product page](#)

## 1 Image

## Overview

Quantity:	400 µL
Target:	ZDHHC13
Binding Specificity:	AA 55-83, N-Term
Reactivity:	Human
Host:	Rabbit
Clonality:	Polyclonal
Conjugate:	This ZDHHC13 antibody is un-conjugated
Application:	Western Blotting (WB)

## Product Details

Immunogen:	This ZDHHC13 antibody is generated from rabbits immunized with a KLH conjugated synthetic peptide between 55-83 amino acids from the N-terminal region of human ZDHHC13.
Isotype:	Ig Fraction
Purification:	This antibody is purified through a protein A column, followed by peptide affinity purification.

## Target Details

Target:	ZDHHC13
Alternative Name:	ZDHHC13 ( <a href="#">ZDHHC13 Products</a> )
Background:	ZDHHC13 is palmitoyltransferase for HD and GAD2 (By similarity).It mediates Mg(2+) transport (By similarity).

Target Details

Molecular Weight:	71 kDa
Gene ID:	54503
UniProt:	<a href="#">Q8IUH4</a>

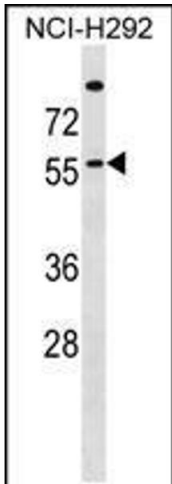
Application Details

Application Notes:	For WB starting dilution is: 1:1000
Restrictions:	For Research Use only

Handling

Format:	Liquid
Concentration:	0.45 mg/mL
Buffer:	Supplied in PBS with 0.09 % (W/V) sodium azide.
Preservative:	Sodium azide
Precaution of Use:	This product contains Sodium azide: a POISONOUS AND HAZARDOUS SUBSTANCE which should be handled by trained staff only.
Storage:	4 °C,-20 °C
Storage Comment:	Store at 4°C for three months and -20°C, stable for up to one year. As with all antibodies care should be taken to avoid repeated freeze thaw cycles. Antibodies should not be exposed to prolonged high temperatures.

Images



**Western Blotting**

**Image 1.** Western blot analysis in NCI-H292 cell line lysates (35ug/lane).